



JSA Architects, Inc.  
1312 Ave. Q  
Lubbock, Texas 79401  
806.370.4550

## Addendum Number One

Issue Date: August 28, 2025

Project: Goodwill Industries of Northwest Texas  
New Retail and Career Resource Center



The following are additions and changes to the Specifications and Drawings and shall become a part of the Contract Documents. Where items in the Specifications or Drawings are supplemented below, all original requirements shall remain in effect.

### Clarification

- Item #1C:** For Clarification:
- Detail 2/A5.2 refers to the low eave exterior wall in the Career Resource Center; the top of gypsum wall board height is 6 inches (min.) above adjacent ceiling.
  - Keyed Note #6 on Sheet A2.2 RCP & FINISH PLAN refers to exterior walls in Sales 101 and Production 109.
  - Refer to Sheet A3.2 PARTITION TYPES for additional information on gypsum wall board heights.
- Item #2C:** For Clarification:
- The network rack will be provided by the Owner.

### Drawings

- Item #1D:** Replace Sheet A2.2 RCP & FINISH PLAN in its entirety with the attached revised Sheet A2.2 RCP & FINISH PLAN for clarification to ceiling cloud features in CRC Reception 110.
- Item #2D:** Replace Sheet A5.2 WALL SECTIONS & DETAILS in its entirety with the attached revised Sheet A5.2 WALL SECTIONS & DETAILS:
- For clarification to ceiling cloud features in CRC Reception 110.
  - For clarifications to 2/A5.2.

**Specifications**

**Item #1S:** Division 09, Section 098430; OMIT Section 098430 SOUND-ABSORBING WALL AND CEILING UNITS in its entirety.

**Item #2S:** Division 09, Section 095100; REVISE paragraph 2.2 ACOUSTICAL UNITS, as follows:

ADD:

B. Acoustical Panels at Suspended Clouds in CRC Reception 110: Painted mineral fiber, with the following characteristics:

1. Classification: ASTM E1264 Type III.
2. Size: 24 by 24 inches, field cut as required.
3. Thickness: 5/8 inches.
4. Panel Edge: Square, field cut as required.
5. Color: White.
6. Suspension System: Exposed grid.
7. Perimeter Trim: Type I.
8. Products:

a. Basis of Design: Armstrong World Industries, Inc; Dune 15/16" Square Lay-in;  
[www.armstrongceilings.com/#sle](http://www.armstrongceilings.com/#sle).

**Item #3S:** Division 09, Section 095100; REVISE paragraph 2.4 ACCESSORIES, as follows:

ADD:

E. Perimeter Trim at Suspended Clouds: extruded aluminum alloy 6063 trim channel, curved profile.

1. Type I: Suspended Acoustical Panel Ceiling

a. Color: White.

b. Size: 4".

c. Basis of Design: Armstrong World Industries, Inc; Axiom curved perimeter trim:  
[www.armstrongceilings.com/#sle](http://www.armstrongceilings.com/#sle)

2. Type II: Suspended Drywall Ceiling

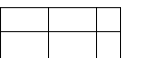
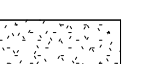





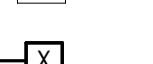
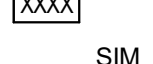
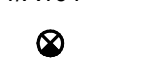



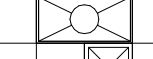




a. Color: Unfinished. Paint in field to match gypsum board ceiling cloud finish.

b. Size: 2-1/2".

c. Basis of Design: Armstrong World Industries, Inc; Axiom Trim for Drywall Trim:  
[www.armstrongceilings.com/#sle](http://www.armstrongceilings.com/#sle).

**END OF ADDENDUM ONE – TOTAL PAGES: 4**

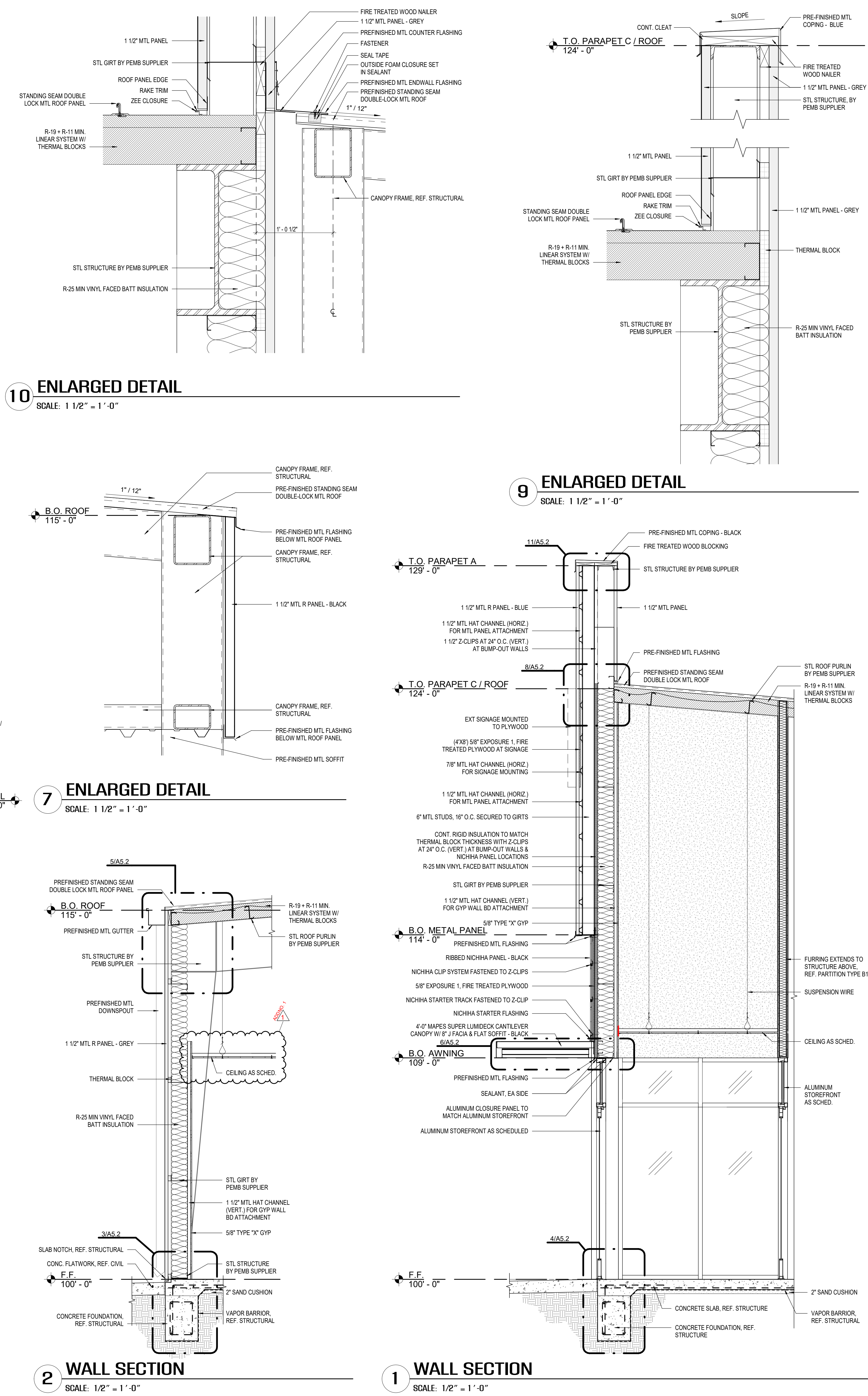
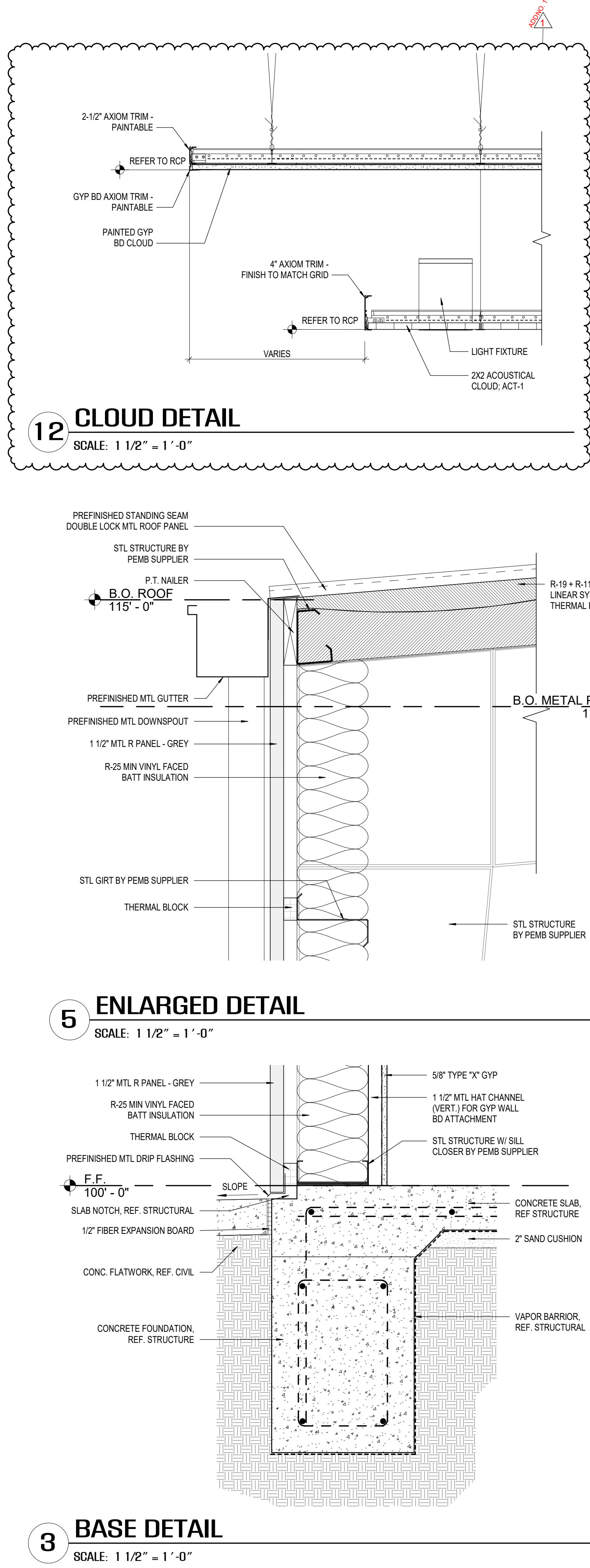
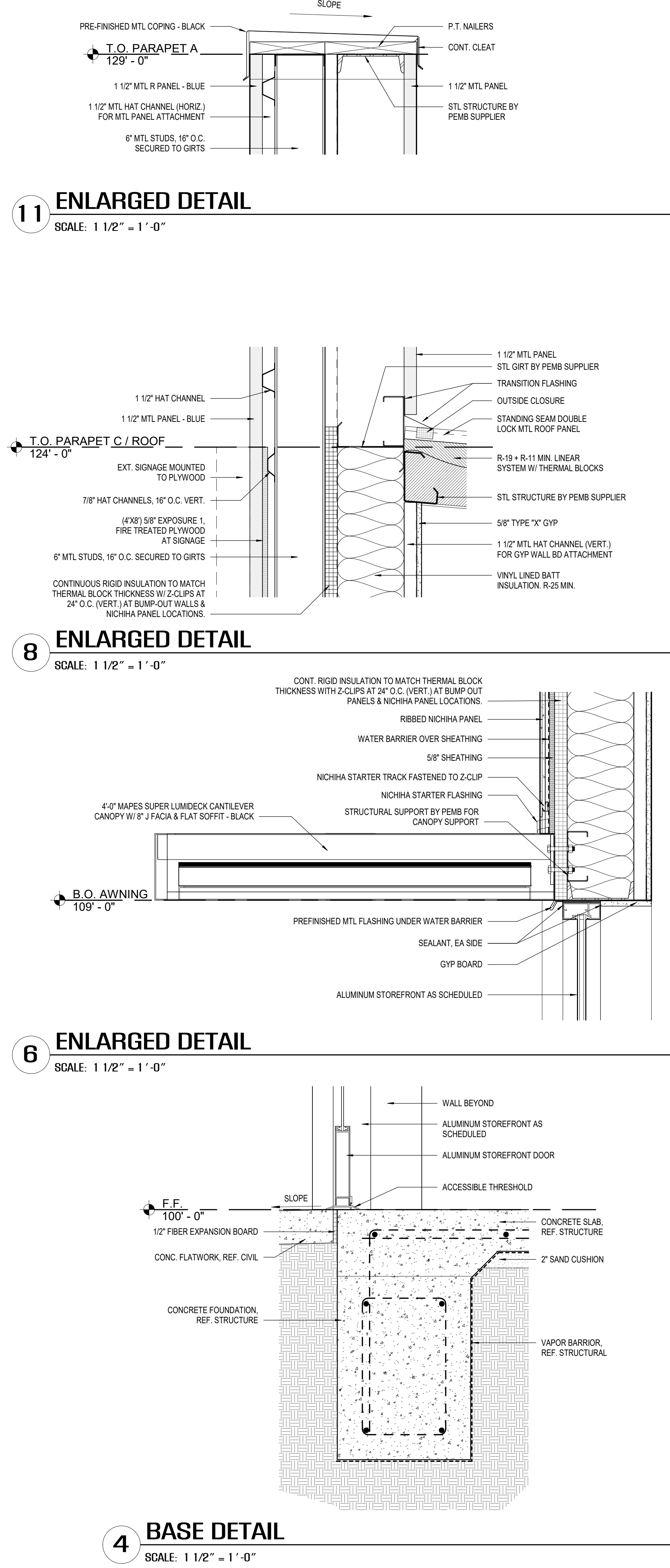


KEYED NOTES		CEILING LEGEND		CEILING NOTES		FINISHES KEY		FINISHES LEGEND		ROOM FINISH SCHEDULE																																																																																																																																																																																																																																																							
<div>1 HOLD DOWN CLIPS ON ACOUSTICAL CEILING PANELS WITHIN 20 FT OF ALL EXTERIOR DOORS.</div> <div>2 ACCENT WALL. REFER TO ROOM FINISH SCHEDULE.</div> <div>3 SPECIAL WALL FINISHES. REFER TO SPECIFICATIONS.</div> <div>4 2X2 SUSPENDED ACOUSTICAL CEILING CLOUD. ACT-1 W/ ARMSTRONG FORMATIONS TRIM. PROVIDE 4" AXIOM. TRIM FINISH TO MATCH GRID AT ALL SPG-1 SUSPENDED ACOUSTICAL CEILING CLOUDS.</div> <div>5 SUSPENDED GYPSUM BOARD CEILING CLOUD. PAINTED PT-5 W/ ARMSTRONG FORMATIONS TRIM. PROVIDE 2-1/2" AXIOM. PAINT TRIM TO MATCH AT ALL SPG-1 GYPSUM BOARD CEILING CLOUDS.</div> <div>6 GYPSUM WALL BOARD ON MTL. HAT CHANNELS UP TO DECK.</div>		<div> 2 x 2 SUSPENDED LAY-IN CEILING W/ 6" BATTS ABOVE</div> <div> GYPSUM BOARD CEILING OVER METAL STUD FRAMING W/ 6" BATTS ABOVE</div> <div> 2 x 4 LIGHT FIXTURE - REFER TO MPE SHEETS</div> <div> 4" LIGHT STRIP - REFER TO MPE SHEETS</div> <div> LIGHT STRIP - REFER TO MPE SHEETS</div> <div> SUSPENDED LIGHTING - REFER TO MPE SHEETS</div> <div> 6" RECESSED CAN LIGHTING - REFER TO MPE SHEETS</div> <div> SUPPLY AIR GRILLE - REFER TO MPE SHEETS</div> <div> RETURN AIR GRILLE - REFER TO MPE SHEETS</div> <div> KEYED NOTE</div> <div> ROOM NUMBER</div> <div> RCP SECTION</div> <div> EXIT SIGN, REF. MPE SHEETS</div> <div> FLOOR BOX, REF. ELECTRICAL</div>		<div>A. COORDINATE ALL MECHANICAL ITEMS, LIGHTING, ETC. WITH CEILING CONTRACTOR. VERIFY EXACT LAYOUT WITH ARCHITECT PRIOR TO INSTALLATION.</div> <div>B. UNLESS OTHERWISE NOTED, PARTITIONS SHALL EXTEND A MINIMUM OF 6" ABOVE HIGHEST ADJACENT CEILING.</div> <div>C. REFER TO SPECIFICATIONS UNDER THE DIFFERENT TYPES OF CEILINGS FOR SPECIAL HANGING REQUIREMENTS.</div> <div>D. PAINT ALL EXPOSED STRUCTURE AND DUCT WORK.</div> <div>E. REFER TO FLOOR PLAN FOR PARTITION TYPES.</div> <div>F. REFER TO MECHANICAL SHEETS FOR GRILLE LOCATIONS.</div>		<div>FINISH CODE DESCRIPTION</div> <div>FLOORS</div> <div>CT-1 CERAMIC TILE: MSI, BELMOND OESIDIAN CERAMIC TILE, NBELOBSX40, COLOR: BLACK, 8X40, STRAIGHT OFFSET</div> <div>GRT-1 GROUT/FLOORS/WALLS: LATICRETE, PERMACOLOR SELECT, COLOR: 45 RAVEN, GROUT JOINT 1/8" MAX.</div> <div>LVP-1 LUXURY VINYL TILE: MANNINGTON, NO RESERVATIONS XPRESS WOOD, BRAZEN NR104, 7.25X48, STRAIGHT OFFSET</div> <div>LVP-2 LUXURY VINYL TILE: MANNINGTON, NO RESERVATIONS XPRESS ABSTRACT, VIACIOUS NR309, 6X36, STRAIGHT OFFSET</div> <div>SC-1 SEALED CONCRETE - REFER TO SPECIFICATIONS</div> <div>BASE</div> <div>RB-1 RESILANT BASE, FLEXCO VINYL WALL BASE, #A532, COLOR: BLACK DAHLIA, 4" COVE.</div> <div>WALLS</div> <div>CG STAINLESS STEEL CORNER GUARD</div> <div>CT-1 CERAMIC TILE: MSI, BELMOND OESIDIAN CERAMIC TILE, NBELOBSX40, COLOR: BLACK, 8X40, STRAIGHT OFFSET</div> <div>CT-2 PORCELAIN TILE: MSI, GRIDSSCALE ICE CERAMIC TILE, NGRICE1224, WHITE-COOL, 12X24, STRAIGHT OFFSET</div> <div>FRP-1 FIBERGLASS REINFORCED PANELS: SEQUENTIA, #FTSTF-1031, WHITE, 48X96</div> <div>GRT-1 GROUT/FLOORS/WALLS: LATICRETE, PERMACOLOR SELECT, COLOR: 45 RAVEN, GROUT JOINT 1/8" MAX.</div> <div>GRT-2 GROUT/FLOORS/WALLS: LATICRETE, PERMACOLOR SELECT, COLOR: 09 FROSTY, GROUT JOINT 1/8" MAX.</div> <div>MT-1 CORRUGATED METAL PANEL, STANDARD GALVANIZED STEEL CORRUGATED METAL PANEL AND TRIM.</div> <div>PT-1 PAINT: SHERWIN WILLIAMS: CUSTOM RGB 187-187-191, LT GREY</div> <div>PT-2 PAINT: SHERWIN WILLIAMS: SW 7005, PURE WHITE</div> <div>PT-3 PAINT: SHERWIN WILLIAMS: CUSTOM RGB 235-151-47, ORANGE</div> <div>ACCENT WALL</div> <div>PT-5 PAINT: SHERWIN WILLIAMS: CUSTOM RGB 6-85-184, BLUE</div> <div>PT-6 PAINT: SHERWIN WILLIAMS: CUSTOM RGB 6-70-158, TEAL</div> <div>PT-7 PAINT: SHERWIN WILLIAMS: CUSTOM RGB 201-221-6, SOFT AVACADO</div> <div>HM FRAMES</div> <div>PT-4 PAINT: SHERWIN WILLIAMS: SW 6891, BLACK MAGIC</div> <div>CEILING</div> <div>ACT-1 ACOUSTICAL CEILING TILE: ARMSTRONG DUNE SQUARE LAY-IN TILES, 24X24X5/8", WHITE: PRELUD XL 15/16" GRID</div> <div>SPG-1 SUSPENDED GRID SYSTEM: ARMSTRONG FORMATIONS, 10" CIRCLE CURVE CLOUD</div> <div>EXPOSED STRUCTURE</div> <div>PT-1 PAINT: SHERWIN WILLIAMS: CUSTOM RGB 187-187-191, LT GREY</div> <div>COUNTERTOPS/SLASHES</div> <div>NS-1 QUARTZ: VIVA STONE, ARVA WHITE</div> <div>PL-1 PLASTIC LAMINATE: WILSONART, 4824 ANTIQUE 22, WHITE CARRARA</div> <div>CABINETS/MILLWORK/SHELVES</div> <div>AW-1 ASSORTED WOOD: STAINED AS SELECTED BY OWNER</div> <div>BH-1 BACKPACK HOOK: GLARO, ALUMINUM COAT HOOK, H12</div> <div>PL-2 PLASTIC LAMINATE: WILSONART, VERTICAL GRAIN, ASIAN NIGHT 7949K-18</div> <div>DOOR</div> <div>PL-3 DOOR / PLASTIC LAMINATE: WILSONART, 1595 CASUAL RUSTIC 16, BLACK</div> <div>RESTROOM STALLS</div> <div>STL-1 STAINLESS STEEL - REFER TO SPECS</div>		<div> CERAMIC TILE (CT-1)</div> <div> LUXURY VINYL PLANK (LVP-1)</div> <div> LUXURY VINYL PLANK (LVP-2)</div> <div> SEALED CONCRETE (SC-1)</div>		<table><tr><th>ROOM NO.</th><th>ROOM NAME</th><th>FLOOR FINISH</th><th>BASE FINISH</th><th>WALL FINISH</th><th>CEILING FINISH</th><th>CEILING HEIGHT</th><th>NOTES</th></tr><tr><td>100</td><td>VESTIBULE</td><td>SC-1</td><td>-</td><td>PT-1</td><td>ACT-1</td><td>10'-0"</td><td></td></tr><tr><td>101</td><td>SALES</td><td>SC-1</td><td>RB-1</td><td>PT-1</td><td>PT-1</td><td>-</td><td></td></tr><tr><td>102</td><td>CASHIER</td><td>SC-1</td><td>RB-1</td><td>PT-1</td><td>PT-1</td><td>-</td><td></td></tr><tr><td>103</td><td>OFFICE</td><td>SC-1</td><td>RB-1</td><td>PT-1</td><td>ACT-1</td><td>9'-0"</td><td></td></tr><tr><td>104</td><td>D. RM</td><td>SC-1</td><td>RB-1</td><td>PT-1</td><td>PT-1</td><td>-</td><td></td></tr><tr><td>105</td><td>D. RM</td><td>SC-1</td><td>RB-1</td><td>PT-1</td><td>PT-1</td><td>-</td><td></td></tr><tr><td>106</td><td>TLT</td><td>SC-1</td><td>RB-1</td><td>FRP-1</td><td>PT-2</td><td>8'-0"</td><td>2</td></tr><tr><td>107</td><td>TLT</td><td>SC-1</td><td>RB-1</td><td>FRP-1</td><td>PT-2</td><td>8'-0"</td><td>2</td></tr><tr><td>108</td><td>BREAK RM</td><td>SC-1</td><td>RB-1</td><td>PT-1</td><td>ACT-1</td><td>9'-0"</td><td>3</td></tr><tr><td>109</td><td>PRODUCTION</td><td>SC-1</td><td>RB-1</td><td>PT-1</td><td>PT-1</td><td>-</td><td>3</td></tr><tr><td>110</td><td>CRG RECEPTION</td><td>LVP-1/LVP-2</td><td>RB-1</td><td>PT-1, PT-3, MT-1</td><td>PT-1, CT-1</td><td>VARIES</td><td>3</td></tr><tr><td>111</td><td>CORRIDOR</td><td>LVP-1/LVP-2</td><td>RB-1</td><td>PT-1, CT-1</td><td>ACT-1</td><td>9'-0"</td><td>3</td></tr><tr><td>112</td><td>CLASSROOM</td><td>LVP-1</td><td>RB-1</td><td>PT-1, *PT-6</td><td>ACT-1</td><td>10'-0"</td><td>4</td></tr><tr><td>113</td><td>CLASSROOM</td><td>LVP-1</td><td>RB-1</td><td>PT-1, *PT-5</td><td>ACT-1</td><td>10'-0"</td><td>4</td></tr><tr><td>114</td><td>CLASSROOM</td><td>LVP-1</td><td>RB-1</td><td>PT-1, *PT-7</td><td>ACT-1</td><td>10'-0"</td><td>4</td></tr><tr><td>115</td><td>BOARD RM.</td><td>LVP-1</td><td>RB-1</td><td>PT-1, *PT-5</td><td>ACT-1</td><td>10'-0"</td><td>4</td></tr><tr><td>116</td><td>OFFICE</td><td>LVP-1</td><td>RB-1</td><td>PT-1</td><td>ACT-1</td><td>9'-0"</td><td>2</td></tr><tr><td>117</td><td>OFFICE</td><td>LVP-1</td><td>RB-1</td><td>PT-1</td><td>ACT-1</td><td>9'-0"</td><td>2</td></tr><tr><td>118</td><td>I.T.</td><td>SC-1</td><td>RB-1</td><td>PT-1</td><td>ACT-1</td><td>9'-0"</td><td>1</td></tr><tr><td>119</td><td>STORAGE</td><td>SC-1</td><td>RB-1</td><td>PT-1</td><td>ACT-1</td><td>9'-0"</td><td>2</td></tr><tr><td>120</td><td>OFFICE</td><td>LVP-1</td><td>RB-1</td><td>PT-1</td><td>ACT-1</td><td>9'-0"</td><td>2</td></tr><tr><td>121</td><td>BREAK ROOM</td><td>LVP-1</td><td>RB-1</td><td>PT-1</td><td>ACT-1</td><td>9'-0"</td><td>3</td></tr><tr><td>122</td><td>MENS</td><td>CT-1</td><td>-</td><td>CT-2, PT-2</td><td>ACT-1</td><td>9'-0"</td><td>2</td></tr><tr><td>123</td><td>JAN.</td><td>SC-1</td><td>RB-1</td><td>FRP-1, PT-1</td><td>ACT-1</td><td>9'-0"</td><td>2</td></tr><tr><td>124</td><td>WOMENS</td><td>CT-1</td><td>-</td><td>CT-2, PT-2</td><td>ACT-1</td><td>9'-0"</td><td>2</td></tr><tr><td>125</td><td>OFFICE</td><td>LVP-1</td><td>RB-1</td><td>PT-1</td><td>ACT-1</td><td>9'-0"</td><td>2</td></tr><tr><td>126</td><td>OFFICE</td><td>LVP-1</td><td>RB-1</td><td>PT-1</td><td>ACT-1</td><td>9'-0"</td><td>2</td></tr><tr><td>127</td><td>OFFICE</td><td>LVP-1</td><td>RB-1</td><td>PT-1</td><td>ACT-1</td><td>9'-0"</td><td>2</td></tr><tr><td>128</td><td>GARAGE</td><td>SC-1</td><td>-</td><td>-</td><td>-</td><td>-</td><td></td></tr></table>								ROOM NO.	ROOM NAME	FLOOR FINISH	BASE FINISH	WALL FINISH	CEILING FINISH	CEILING HEIGHT	NOTES	100	VESTIBULE	SC-1	-	PT-1	ACT-1	10'-0"		101	SALES	SC-1	RB-1	PT-1	PT-1	-		102	CASHIER	SC-1	RB-1	PT-1	PT-1	-		103	OFFICE	SC-1	RB-1	PT-1	ACT-1	9'-0"		104	D. RM	SC-1	RB-1	PT-1	PT-1	-		105	D. RM	SC-1	RB-1	PT-1	PT-1	-		106	TLT	SC-1	RB-1	FRP-1	PT-2	8'-0"	2	107	TLT	SC-1	RB-1	FRP-1	PT-2	8'-0"	2	108	BREAK RM	SC-1	RB-1	PT-1	ACT-1	9'-0"	3	109	PRODUCTION	SC-1	RB-1	PT-1	PT-1	-	3	110	CRG RECEPTION	LVP-1/LVP-2	RB-1	PT-1, PT-3, MT-1	PT-1, CT-1	VARIES	3	111	CORRIDOR	LVP-1/LVP-2	RB-1	PT-1, CT-1	ACT-1	9'-0"	3	112	CLASSROOM	LVP-1	RB-1	PT-1, *PT-6	ACT-1	10'-0"	4	113	CLASSROOM	LVP-1	RB-1	PT-1, *PT-5	ACT-1	10'-0"	4	114	CLASSROOM	LVP-1	RB-1	PT-1, *PT-7	ACT-1	10'-0"	4	115	BOARD RM.	LVP-1	RB-1	PT-1, *PT-5	ACT-1	10'-0"	4	116	OFFICE	LVP-1	RB-1	PT-1	ACT-1	9'-0"	2	117	OFFICE	LVP-1	RB-1	PT-1	ACT-1	9'-0"	2	118	I.T.	SC-1	RB-1	PT-1	ACT-1	9'-0"	1	119	STORAGE	SC-1	RB-1	PT-1	ACT-1	9'-0"	2	120	OFFICE	LVP-1	RB-1	PT-1	ACT-1	9'-0"	2	121	BREAK ROOM	LVP-1	RB-1	PT-1	ACT-1	9'-0"	3	122	MENS	CT-1	-	CT-2, PT-2	ACT-1	9'-0"	2	123	JAN.	SC-1	RB-1	FRP-1, PT-1	ACT-1	9'-0"	2	124	WOMENS	CT-1	-	CT-2, PT-2	ACT-1	9'-0"	2	125	OFFICE	LVP-1	RB-1	PT-1	ACT-1	9'-0"	2	126	OFFICE	LVP-1	RB-1	PT-1	ACT-1	9'-0"	2	127	OFFICE	LVP-1	RB-1	PT-1	ACT-1	9'-0"	2	128	GARAGE	SC-1	-	-	-	-	
ROOM NO.	ROOM NAME	FLOOR FINISH	BASE FINISH	WALL FINISH	CEILING FINISH	CEILING HEIGHT	NOTES																																																																																																																																																																																																																																																										
100	VESTIBULE	SC-1	-	PT-1	ACT-1	10'-0"																																																																																																																																																																																																																																																											
101	SALES	SC-1	RB-1	PT-1	PT-1	-																																																																																																																																																																																																																																																											
102	CASHIER	SC-1	RB-1	PT-1	PT-1	-																																																																																																																																																																																																																																																											
103	OFFICE	SC-1	RB-1	PT-1	ACT-1	9'-0"																																																																																																																																																																																																																																																											
104	D. RM	SC-1	RB-1	PT-1	PT-1	-																																																																																																																																																																																																																																																											
105	D. RM	SC-1	RB-1	PT-1	PT-1	-																																																																																																																																																																																																																																																											
106	TLT	SC-1	RB-1	FRP-1	PT-2	8'-0"	2																																																																																																																																																																																																																																																										
107	TLT	SC-1	RB-1	FRP-1	PT-2	8'-0"	2																																																																																																																																																																																																																																																										
108	BREAK RM	SC-1	RB-1	PT-1	ACT-1	9'-0"	3																																																																																																																																																																																																																																																										
109	PRODUCTION	SC-1	RB-1	PT-1	PT-1	-	3																																																																																																																																																																																																																																																										
110	CRG RECEPTION	LVP-1/LVP-2	RB-1	PT-1, PT-3, MT-1	PT-1, CT-1	VARIES	3																																																																																																																																																																																																																																																										
111	CORRIDOR	LVP-1/LVP-2	RB-1	PT-1, CT-1	ACT-1	9'-0"	3																																																																																																																																																																																																																																																										
112	CLASSROOM	LVP-1	RB-1	PT-1, *PT-6	ACT-1	10'-0"	4																																																																																																																																																																																																																																																										
113	CLASSROOM	LVP-1	RB-1	PT-1, *PT-5	ACT-1	10'-0"	4																																																																																																																																																																																																																																																										
114	CLASSROOM	LVP-1	RB-1	PT-1, *PT-7	ACT-1	10'-0"	4																																																																																																																																																																																																																																																										
115	BOARD RM.	LVP-1	RB-1	PT-1, *PT-5	ACT-1	10'-0"	4																																																																																																																																																																																																																																																										
116	OFFICE	LVP-1	RB-1	PT-1	ACT-1	9'-0"	2																																																																																																																																																																																																																																																										
117	OFFICE	LVP-1	RB-1	PT-1	ACT-1	9'-0"	2																																																																																																																																																																																																																																																										
118	I.T.	SC-1	RB-1	PT-1	ACT-1	9'-0"	1																																																																																																																																																																																																																																																										
119	STORAGE	SC-1	RB-1	PT-1	ACT-1	9'-0"	2																																																																																																																																																																																																																																																										
120	OFFICE	LVP-1	RB-1	PT-1	ACT-1	9'-0"	2																																																																																																																																																																																																																																																										
121	BREAK ROOM	LVP-1	RB-1	PT-1	ACT-1	9'-0"	3																																																																																																																																																																																																																																																										
122	MENS	CT-1	-	CT-2, PT-2	ACT-1	9'-0"	2																																																																																																																																																																																																																																																										
123	JAN.	SC-1	RB-1	FRP-1, PT-1	ACT-1	9'-0"	2																																																																																																																																																																																																																																																										
124	WOMENS	CT-1	-	CT-2, PT-2	ACT-1	9'-0"	2																																																																																																																																																																																																																																																										
125	OFFICE	LVP-1	RB-1	PT-1	ACT-1	9'-0"	2																																																																																																																																																																																																																																																										
126	OFFICE	LVP-1	RB-1	PT-1	ACT-1	9'-0"	2																																																																																																																																																																																																																																																										
127	OFFICE	LVP-1	RB-1	PT-1	ACT-1	9'-0"	2																																																																																																																																																																																																																																																										
128	GARAGE	SC-1	-	-	-	-																																																																																																																																																																																																																																																											
										FINISH NOTES																																																																																																																																																																																																																																																							
										<div>1 PAINTED FIRE TREATED PLYWOOD ON ALL WALLS.</div> <div>2 WATER RESISTANT GYPSUM BOARD AT ALL WALLS</div> <div>3 WATER RESISTANT GYPSUM BOARD AT ALL WALLS WITH PLUMBING FIXTURES.</div> <div>4 SPECIAL WALL FINISHES WHERE NOTED</div> <div>5 PT-1 AT EXPOSED STRUCTURE &amp; DUCTWORK; PT-5 AT SPG-1 GYPSUM BOARD CEILING CLOUD; ACT-1 AT SPG-1 SUSPENDED ACOUSTICAL CEILING CLOUD</div>																																																																																																																																																																																																																																																							





Autodesk Docs: 2/25/25 07:22:24 PM Autodesk Docs: 2/25/25 07:22:24 PM Autodesk Docs: 2/25/25 07:22:24 PM



**jsa**  
architects

1312 Ave O,  
Lubbock, Tx 79401  
806-370-4550

Houston - Kerrville - Lubbock  
Midland - Odessa

GOODWILL INDUSTRIES OF NORTHWEST TEXAS  
**NEW RETAIL & CAREER RESOURCE CENTER**  
512 N MLK JR. BLVD LUBBOCK, TX 79403

**Goodwill**  
Industries of Northwest Texas

Issue / Revisions:

No.	Date	Description
0	08.08.2025	100% CONSTRUCTION DOCUMENTS
1	08.28.2025	ADDENDUM NO. 1
2		
3		
4		
5		
6		
7		
8		
9		

08.28.2025  
JSA No.: 2025-07

**WALL SECTIONS & DETAILS**

**A5.2**