

November 12, 2024



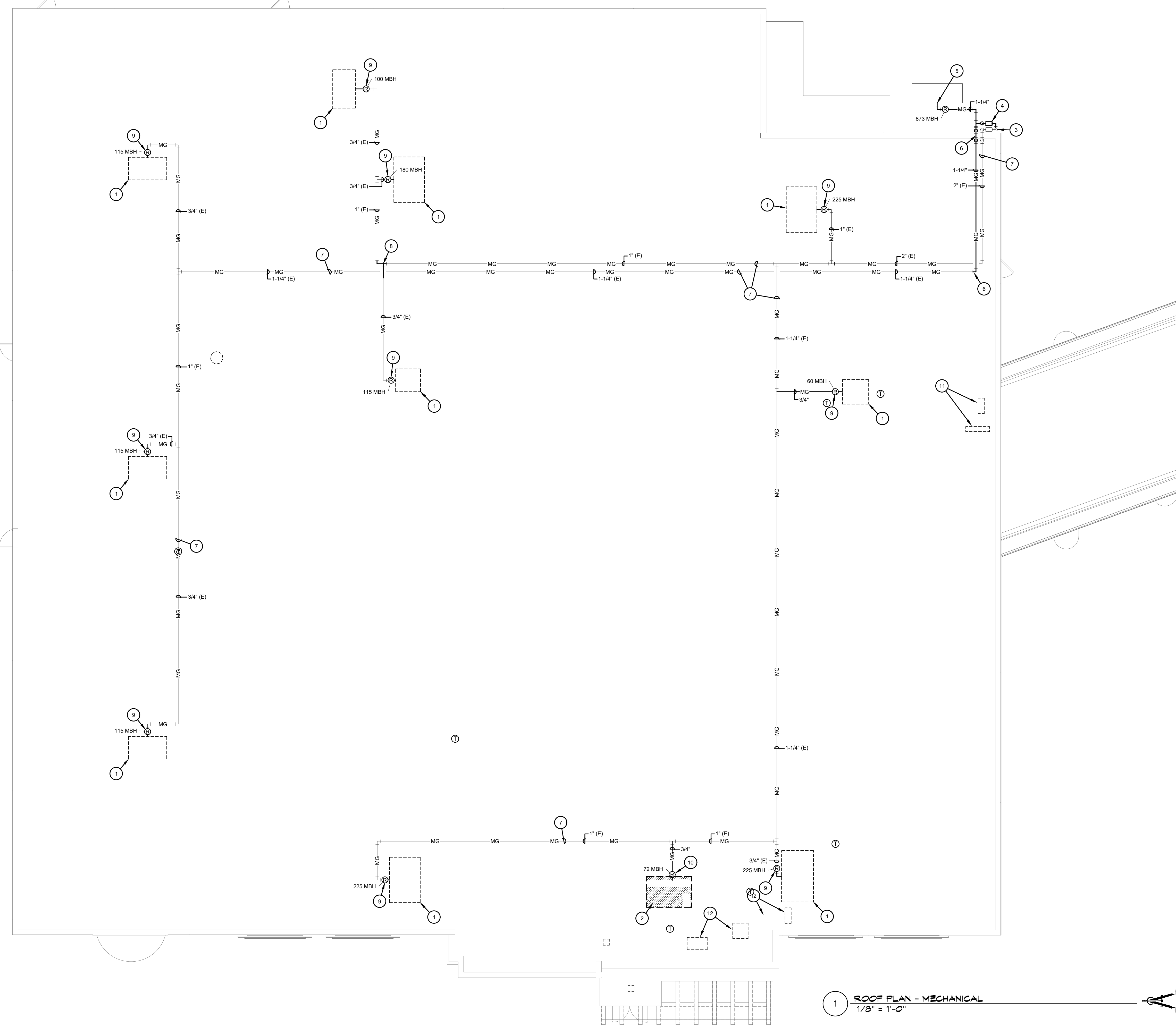
S.P.A.G Renovation
6811 Indiana Avenue
Lubbock, Texas 79413
CHA Project #2405

Proposals due Friday, November 15, 2024 by 2:00 p.m.

Addendum Two

1. Added sheet M101 to the drawing set.
2. Sheet A606 is not part of the set and was omitted from the drawing index.

End of Addendum One

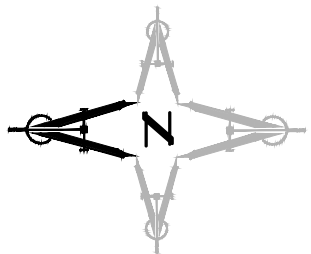


- GENERAL NOTES:**
- ALL HVAC INSTALLATIONS SHALL COMPLY WITH THE INTERNATIONAL MECHANICAL CODE, NFPA 90, AND ALL LOCAL, STATE, AND FEDERAL ORDINANCES, CODES, LAWS, AND REGULATIONS.
 - ALL PLUMBING INSTALLATIONS SHALL COMPLY WITH THE INTERNATIONAL PLUMBING CODE, NFPA 90, AND ALL LOCAL, STATE, AND FEDERAL ORDINANCES, CODES, LAWS, AND REGULATIONS.
 - PROVIDE GAS COCK, DIRT LEG, UNION, AND FLEX CONNECTION AT GAS LINE CONNECTION TO GAS-FIRED EQUIPMENT.
 - CONTRACTOR TO VERIFY LOCATION AND SIZE OF ALL EXISTING EQUIPMENT AND UTILITIES.

- KEYED NOTES:**
- EXISTING GAS-FIRED ROOFTOP UNIT TO REMAIN.
 - NEW GAS-FIRED ROOFTOP UNIT ON NEW ROOF CURB. SEE HVAC PLAN AND SCHEDULES FOR ADDITIONAL INFORMATION.
 - THE CONTRACTOR SHALL COORDINATE WITH GAS COMPANY TO PROVIDE 2# GAS AT EXISTING GAS METER, AND TO PROVIDE 1202 CFH AT EXISTING METER. ALL GAS PIPING DOWN-STREAM OF EXISTING METER SHALL BECOME 2# AND REQUIRE INSTALLATION OF A GAS PRESSURE REGULATOR AT EACH PIECE OF EQUIPMENT.
 - EXTEND AND CONNECT NEW 1-1/4" 2# GAS LINE TO NEW GAS METER. CONTRACTOR SHALL COORDINATE WITH GAS COMPANY TO PROVIDE NEW GAS METER FOR 1218 CFH, AND CONNECTION TO EXISTING GAS MAIN.
 - REMOVE EXISTING NAT. GAS BRANCH SERVING GENERATOR AND CAP. EXTEND AND CONNECT NEW 1-1/4" 2# GAS LINE FROM NEW GAS METER TO EXISTING GENERATOR. PROVIDE NEW GAS COCK, DIRT LEG, UNION, FLEX CONNECTION, AND PRESSURE REGULATOR AT CONNECTION TO GENERATOR.
 - EXTEND NEW 1-1/4" 2# GAS LINE UP TO ROOF AND CONNECT TO EXISTING 1-1/4" GAS LINE AS SHOWN.
 - EXISTING GAS PIPING ON ROOF TO REMAIN, UNLESS NOTED OTHERWISE. (TYPICAL)
 - REMOVE CONNECTION FROM EXISTING 3/4" GAS LINE TO EXISTING 1-1/4" GAS LINE. EXTEND AND CONNECT EXISTING 3/4" GAS LINE TO EXISTING 1" GAS LINE AS SHOWN.
 - PROVIDE NEW GAS COCK, DIRT LEG, UNION, FLEX CONNECTION, AND PRESSURE REGULATOR AT CONNECTION TO EXISTING ROOFTOP UNIT.
 - PROVIDE NEW GAS COCK, DIRT LEG, UNION, FLEX CONNECTION, AND PRESSURE REGULATOR AT CONNECTION TO NEW ROOFTOP UNIT.
 - EXISTING MINI-SPLIT SYSTEM SHALL REMAIN. INDOOR WALL MOUNTED UNIT SHALL BE RELOCATED, AS INDICATED ON MECHANICAL PLAN.
 - EXISTING SPIT SYSTEM HEAT PUMP SYSTEM AND EXISTING MINI-SPLIT SYSTEM SHALL BE REMOVED. SEAL REMAINING ROOF PENETRATIONS WEATHERTIGHT.

MECHANICAL LEGEND	
SYMBOL	DESCRIPTION
—G—	LOW PRESSURE NATURAL GAS LINE
—MG—	MEDIUM PRESSURE NATURAL GAS LINE
(E)	EXISTING PIPING OR EQUIPMENT
—┘—	ELBOW TURNED DOWN
—┘—	ELBOW TURNED UP
— — —	UNION
—R—	GAS REGULATOR
—C—	GAS COCK

1 ROOF PLAN - MECHANICAL
1/8" = 1'-0"



BSA Consulting Engineers, PLLC
 Electrical & Mechanical Consulting Engineers
 14302 Slide Road
 Lubbock, TX 79424
 Phone: 806.780.7475
 Web: www.bsaeengineering.com
 TEXAS FIRM REGISTRATION NO. F-4415
 © 2014 CHAPMAN HARVEY ARCHITECTS, INC.
 UNAUTHORIZED DUPLICATION PROHIBITED.

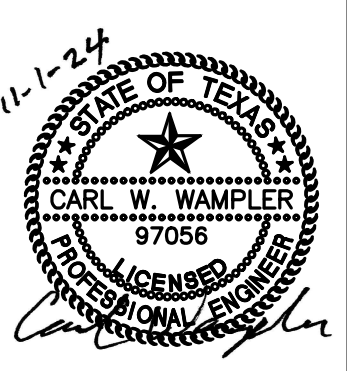
ChapmanHarvey
ARCHITECTS, INC.
 612 BROADWAY | Lubbock, Texas 79401 | 806.749.1153
 WWW.CHAPMANHARVEY.COM | TBAE FIRM - BR961



SOUTH PLAINS ASSOCIATION OF GOVERNMENTS
SPAG REMODEL
 6811 INDIANA AVENUE
 LUBBOCK, TX 79413

DATE: 11/01/24
 JOB: 2405

REVISIONS		
#	DATE	DESCRIPTION



sheet
M101
 of 3