

RANSOM CANYON JONES-WARNER PARK IMPROVEMENTS

TOWN OF RANSOM CANYON RANSOM CANYON, TEXAS

SHEET INDEX

General

G001 Cover Sheet and Index

Landscape

L100 Existing Conditions
L101 Site Demolition Plan
L102 Site Annotation & Layout Plan
L103 Site Grading Plan
L104 Site Planting Plan
L501 Site Details
L502 Site Details

Electrical

E3100 Electrical Site Plan
E-601 Electrical Schedule

Parkhill

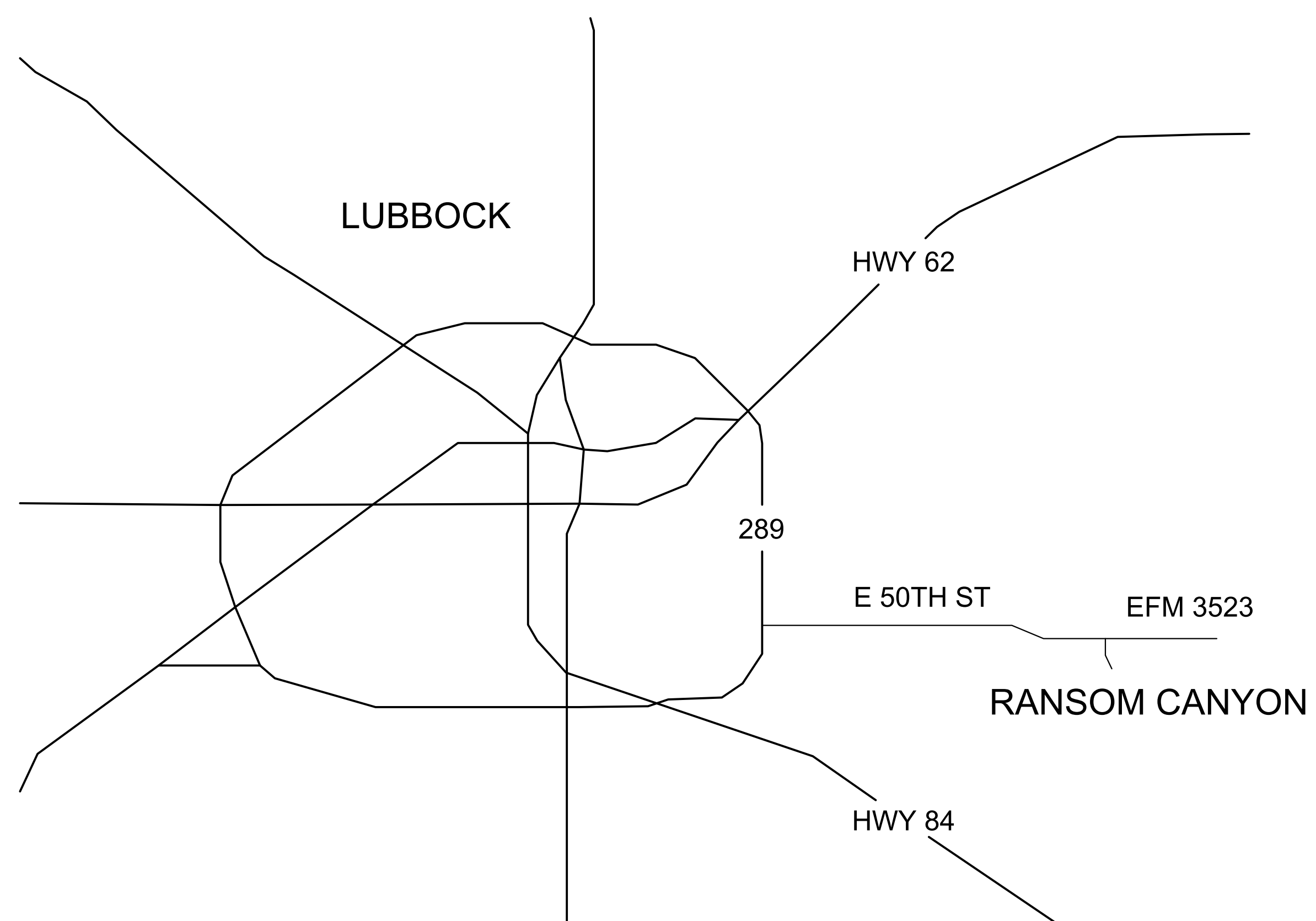


Parkhill.com

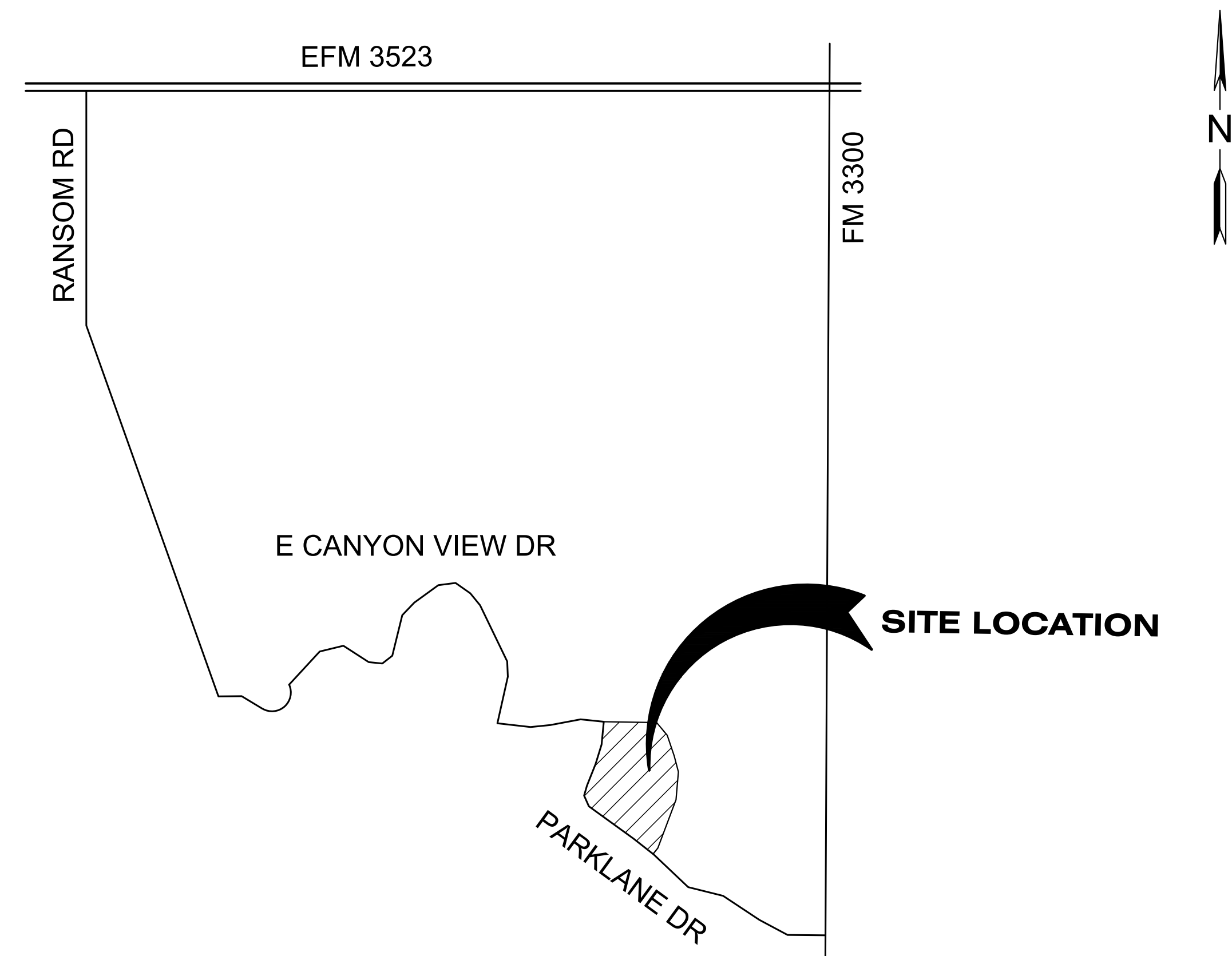
Ransom Canyon Jones-Warner Park Improvements



VICINITY MAP (NTS)



LOCATION MAP (NTS)



CLIENT

Town of Ransom Canyon

24 Lee Kitchens Drive
Ransom Canyon, Texas 79366

PROJECT NO.

41339.23

KEY PLAN

04/16/2024 Construction Documents

#	DATE	DESCRIPTION

Cover Sheet
And Index
G001



CLIENT
Town of Ransom Canyon

24 Lee Kitchens Drive
Ransom Canyon, Texas 79366

PROJECT NO.

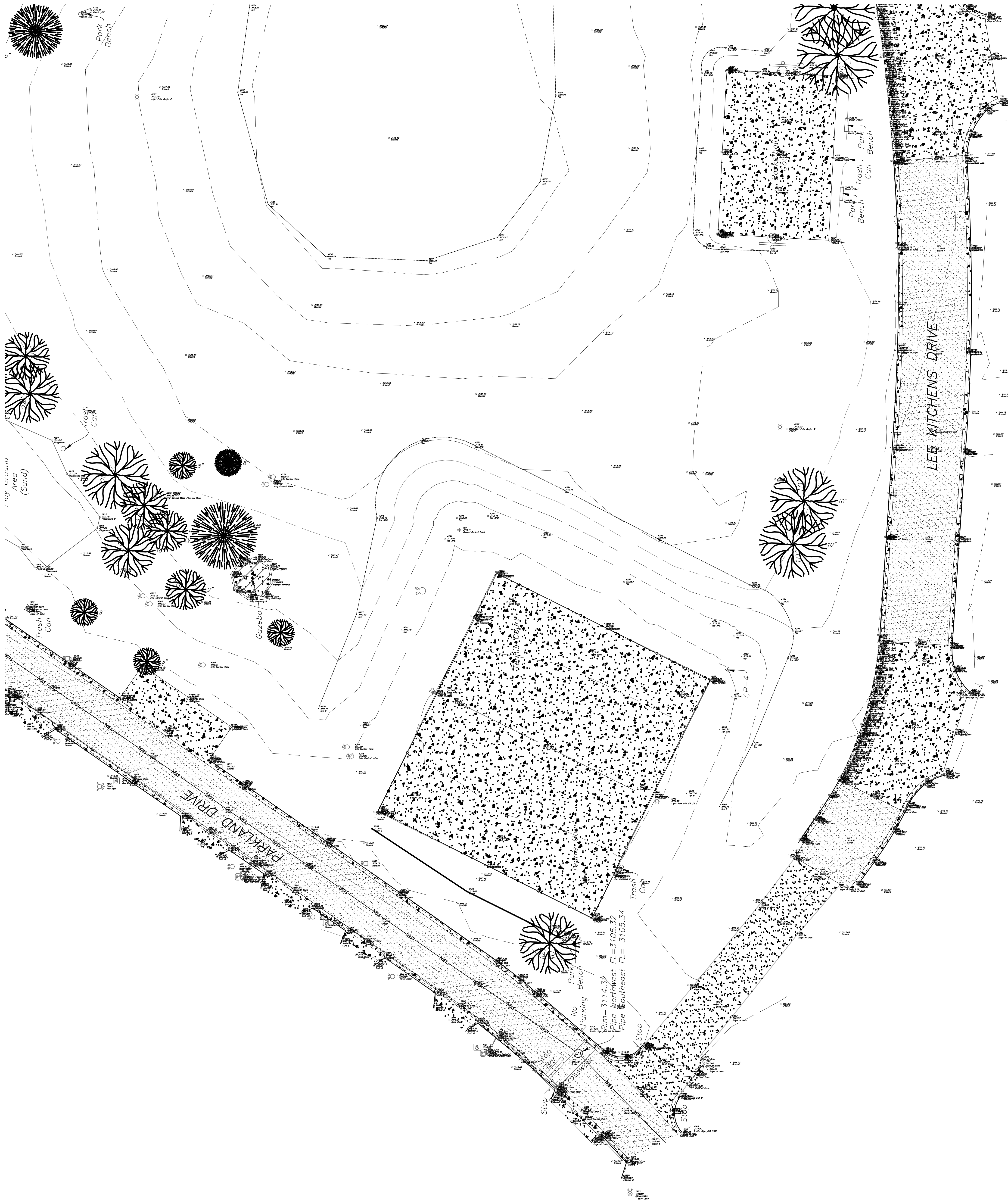
41339.23

KEY PLAN

TOPOGRAPHIC LEGEND

SCALE: 1" = 30'

- Benchmark
- Control Point
- Electric Light Ground
- Electric Light Pole
- Electric Pedestal
- Tree Cedar
- Tree Deciduous
- Communications Pedestal
- Gas Meter
- Water Fire Hydrant
- Water Hose Bib
- Water Irrigation Control Valve
- Water Meter
- Water Valve
- Sanitary Sewer Manhole
- Sanitary Sewer Cleanout
- Traffic Sign
- Mailbox
- Fiber Optic Underground
- Fence Chainlink
- Sanitary Sewer Line Atlas
- Topographic Contour Major
- Topographic Contour Minor
- Curb And Gutter
- Asphalt
- Building Overhang
- Concrete
- Gravel



Surveyor's report

This survey is based on the Texas coordinate system of 1983 (NAD83), Texas North Central, zone 4202. Elevations are based on NAVD88. Convergence = -01'44'01.21" Combined scale factor = 0.99976328 Distances are at Grid.

GPS BASE STATION:

Northing: 7256309.12
Easting: 1000051.71
Elevation: 3111.78

Location of underground utilities determined from surface evidence and/or reported location and may not correctly indicate the actual location or existence of those utilities. Utility requests were made to Texas 811, ticket number 2454786932. Additional utilities may exist which this survey does not indicate.

This plat is invalid unless it bears the surveyor's original seal and signature.

This plat was prepared from an actual survey of the property and the information hereon represents the findings of this survey to the best of my knowledge and belief.

Surveyed:
February 21, 2024 & March 1, 2024

Signed:
March 12, 2024

Franklin Leamons
R.P.L.S. 6889

SURVEY CONTROL

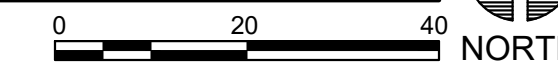
POINT #	HORIZONTAL AND VERTICAL CONTROL			DESCRIPTION
	NORTHING	EASTING	ELEVATION	
CP-1	7256309.12	1000051.71	3111.78	1/2" BAR W/ PSC CONTROL CAP
CP-2	7253241.75	1001049.32	3074.29	1/2" BAR W/ PSC CONTROL CAP
CP-3	7255314.36	1001212.48	3116.90	1/2" BAR W/ PSC CONTROL CAP
CP-4	7255891.13	1000338.44	3113.24	1/2" BAR W/ PSC CONTROL CAP

HORIZONTAL DATUM : TEXAS STATE PLANE, NAD83(2011), NORTH CENTRAL ZONE 4202
VERTICAL DATUM: NAVD88

E11 Atmos Energy
LMD Lubbock Wtr-ord#10176 Reg. Proposed Excavation M...
SOL Sudduth Communications West Texas
SOH South Plains Telephone Coop Inc.
SPE South Plains Electric Coop Inc.
TWN1 AT&T

A1 EXISTING CONDITIONS

1" = 20'



Existing Conditions
L100



CLIENT
 Town of Ransom Canyon
 24 Lee Kitchens Drive
 Ransom Canyon, Texas 79366

PROJECT NO.
 41339.23

KEY PLAN

04/16/2024 Construction Documents

DATE DESCRIPTION

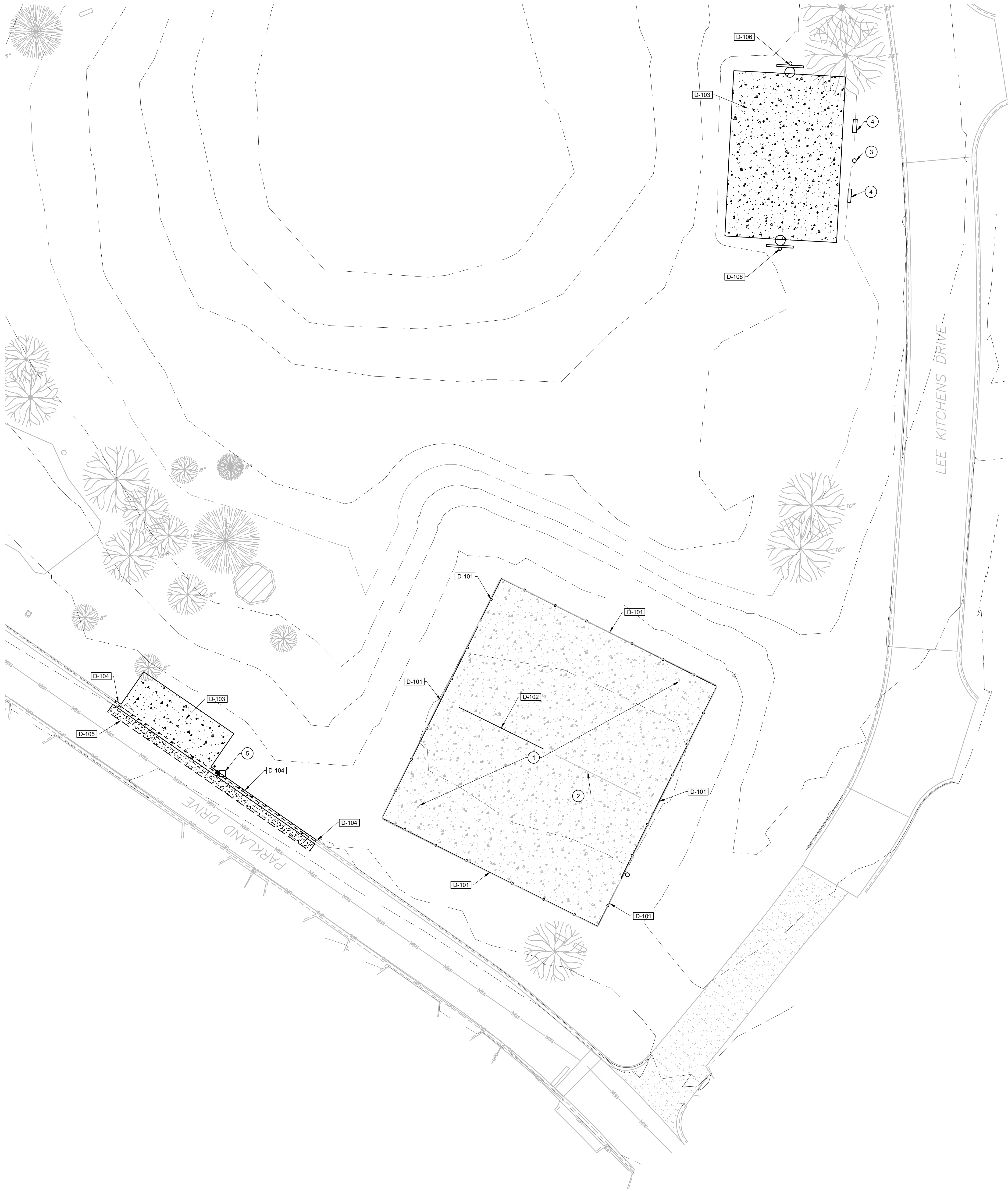
Site Demolition Plan
L101

REFERENCE NOTES SCHEDULE

SYMBOL	DESCRIPTION
1	EXISTING CONCRETE SLAB TO REMAIN
2	EXISTING NET/POST ON EAST COURT TO REMAIN
3	EXISTING TRASH RECEPTACLE TO BE RELOCATED BY OWNER
4	EXISTING BENCH TO BE RELOCATED BY OWNER
5	MAILBOX TO BE RELOCATED BY OWNER
SYMBOL	DEMOLITION DESCRIPTION
D-101	REMOVE EXISTING FENCE. CUT POSTS FLUSH WITH SLAB AND FILL OPENING WITH NON-SHRINK GROUT.
D-102	REMOVE EXISTING NET AND POSTS. FILL OPENING WITH NON-SHRINK GROUT.
D-103	REMOVE EXISTING CONCRETE
D-104	SAWCUT AND REMOVE EXISTING CURB AND GUTTER
D-105	SAWCUT AND REMOVE ASPHALT AS REQUIRED TO FACILITATE CONSTRUCTION OF NEW CONCRETE SLAB
D-106	REMOVE EXISTING BASKETBALL GOALS AND FOOTINGS

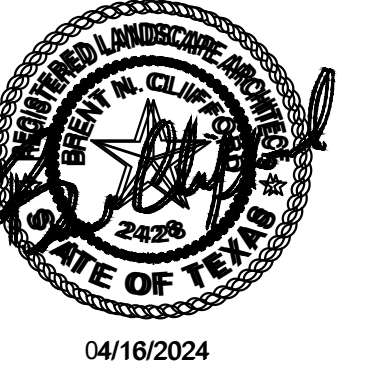
DEMOLITION NOTES

- A. CONTRACTOR SHALL FIELD VERIFY ALL DIMENSIONS AND GRADES, NEW OR EXISTING, PRIOR TO CONSTRUCTION. NOTIFY THE ENGINEER OF ANY DISCREPANCIES BETWEEN WHAT'S SHOWN VERSUS WHAT'S OBSERVED IN THE FIELD.
- B. CONTRACTOR SHALL FIELD VERIFY EXACT LOCATIONS OF EXISTING UTILITIES PRIOR TO COMMENCING WORK. EXCAVATION OR TRENCHING. UTILITIES DAMAGED BY THE CONTRACTOR DURING CONSTRUCTION SHALL BE REPAIRED AT THE CONTRACTOR'S EXPENSE.
- C. MANHOLES, CLEANOUTS, VALVE BOXES AND OTHER IMPROVEMENTS IN AFFECTED PAVED AREAS SHALL BE RAISED/LOWERED TO MEET NEW FINISH GRADES.
- D. FULL-DEPTH SAWCUT ALL EXISTING PAVEMENT SECTIONS WHERE PROPOSED PAVEMENT IS TO BE INTO EXISTING PAVEMENT.
- E. CONTRACTOR SHALL COORDINATE WITH OWNER PRIOR TO REMOVING ANY EXISTING FEATURES.
- F. ANY RELOCATION OF EXISTING UTILITIES REQUIRED AS A RESULT OF THE WORK INVOLVED, SHALL BE CONSIDERED SUBSIDIARY TO THE VARIOUS ITEMS OF CONSTRUCTION UNLESS OTHERWISE SHOWN.
- G. VALVE BOXES, IF ANY, WITHIN THE PROPOSED PAVED AREA SHALL BE REPLACED WITH CAST IRON RISERS AND LIDS, AND ADJUSTED TO FINISH GRADE.
- H. CONTRACTOR SHALL COORDINATE WITH THE APPROPRIATE PERSONNEL FOR EXISTING UTILITY INFORMATION.
- I. CONTRACTOR SHALL NOTIFY ENGINEER IMMEDIATELY OF ANY CONFLICTS THAT MAY EXIST BETWEEN EXISTING CONDITIONS AND WHAT IS SHOWN ON PLANS PRIOR TO CONSTRUCTION.
- J. REMOVAL & DISPOSAL OF EXISTING SURFACING INCLUDING ASPHALT DEBRIS, RUBBISH, GRAVEL SURFACING, ETC. SHALL BE CONSIDERED SUBSIDIARY TO VARIOUS ITEMS OF THE PROJECT AND SHALL BECOME THE PROPERTY OF THE CONTRACTOR. CONTRACTOR SHALL LEGALLY DISPOSE OF ALL CONSTRUCTION DEBRIS IN AN APPROVED LANDFILL.
- K. CONTRACTOR SHALL PROTECT EXISTING IMPROVEMENTS THAT SHALL REMAIN. ANY DAMAGE AS A RESULT OF CONSTRUCTION ACTIVITY SHALL BE REPAIRED TO ITS ORIGINAL CONDITION OR BETTER AT CONTRACTOR'S EXPENSE.
- L. CONTRACTOR IS FULLY RESPONSIBLE FOR OBTAINING ALL REQUIRED PERMITS FOR STATE AND LOCAL AUTHORITIES.



A1 SITE DEMOLITION PLAN
 1" = 20'

A:\2023\41339.23\03_DSGN01_DWG\060_LAND04_SHEET\SL101-41339.DWG, 4/15/2024 10:59 AM, ipando



CLIENT
 Town of Ransom Canyon
 24 Lee Kitchens Drive
 Ransom Canyon, Texas 79366

PROJECT NO.
 41339.23

KEY PLAN

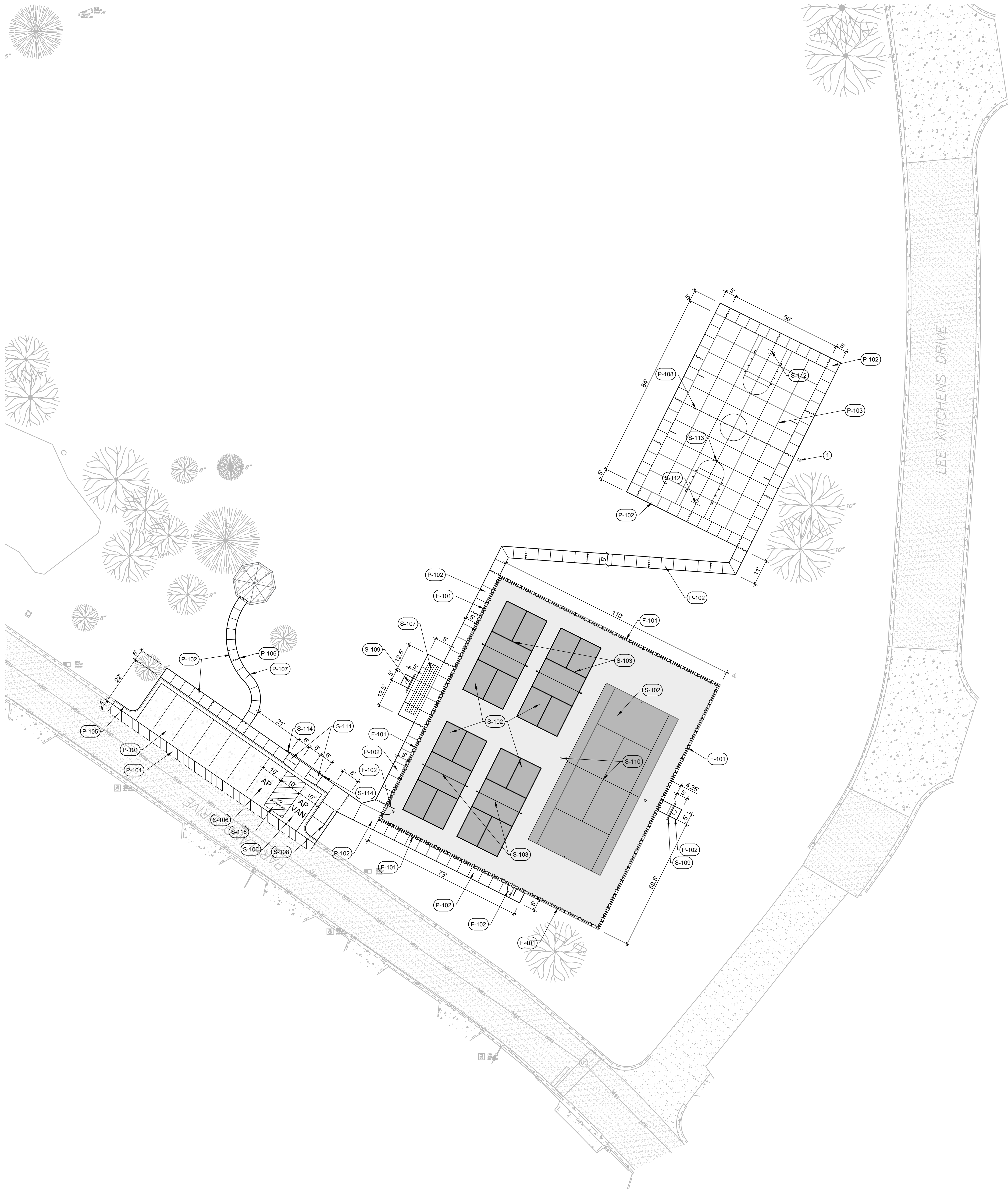
#	DATE	DESCRIPTION
1	04/16/2024	Construction Documents

REFERENCE NOTES SCHEDULE

SYMBOL	FENCING DESCRIPTION
(F-101)	10' HT. CHAIN-LINK FENCE SET IN MOW CURB. SOUTH AND WEST SIDES TO RECEIVE GREEN WING SLATS FROM PRIVACY LINK - SEE DETAIL C5/L501
(F-102)	4' WIDE, 8' HT. CHAIN-LINK GATE - SEE DETAIL C3/L501
SYMBOL	PAVING DESCRIPTION
(P-101)	6" THICK CONCRETE - SEE DETAIL A2/L501
(P-102)	4" THICK CONCRETE - DETAIL A1/L501
(P-103)	6" THICK CONCRETE. PROVIDE SAW-CUT COCONTROL JOINTS ON APPROXIMATE 8' SQUARES LENGTH AND WIDTH ACROSS COURT - SEE DETAIL B1/L501
(P-104)	NEW ASPHALT PATCH - SEE DETAIL B2/L501
(P-105)	NEW CONCRETE CURB AND GUTTER - SEE DETAIL B3/L501
(P-106)	EXPANSION JOINT. SEE DETAIL A4/L501
(P-107)	CONTROL JOINT. SEE DETAIL A4/L501
(P-108)	DOWELED CONSTRUCTION JOINT. SEE DETAIL D1/L501
SYMBOL	SITE DESCRIPTION
(S-102)	TENNIS COURT & PICKLEBALL COURTS LAYOUT PER DETAIL A4/L502
(S-103)	DOUGLASS PICKLEBALL PREMIER S3 SURFACE MOUNT NET AND POSTS. ITEM # 63080 - REFER TO MANUFACTURER'S SPECIFICATIONS
(S-106)	ADD ADA SYMBOL TO PARKING STALL PER DETAIL B5/B6/L501
(S-107)	3 ROW BLEACHERS - AS SPECIFIED
(S-108)	WAGNER 9 LOOP MILL STEEL WAVE BIKE RACK, EMBED MOUNT. SEE DETAIL D4/L502
(S-109)	SPORTS LIGHTING - REFER TO ELECTRICAL
(S-110)	TENNIS COURT NET AND POSTS - DETAIL A2/L502
(S-111)	ADA CURB RAMP - SEE DETAIL A3/L501
(S-112)	BASKETBALL GOAL - AS SPECIFIED
(S-113)	APPLY BASKETBALL COURT MARKINGS AS SHOWN
(S-114)	NEW ADA SIGNAGE - SEE DETAIL B4, B5
(S-115)	ACCESS AISLE MARKING - SEE DETAIL D2

KEY NOTES - ALTERNATE #1

- AS INDICATED BY: (1)
 1. BASKETBALL LIGHTING - REF ELECTRICAL



A1 SITE ANNOTATION & LAYOUT PLAN
 1" = 20'



A:\2023\41339_23\03_DSGN01_DWG\060_LAND\04_SHEET\SL102-41339.DWG 4/15/2024 12:29 PM smoozy



CLIENT

Town of Ransom Canyon
24 Lee Kitchens Drive
Ransom Canyon, Texas 79366

PROJECT NO.

41339.23

KEY PLAN

GENERAL AND SURVEY NOTES

- A. REFER TO UTILITY PLAN AND SURVEY FOR ALL EXISTING AND PROPOSED UTILITIES IN THIS AREA.
- B. CONTRACTOR SHALL PROVIDE AND MAINTAIN ALL NECESSARY SIGNS AND BARRICADES FOR THE PROTECTION OF THE WORK AND THE SAFETY OF THE PUBLIC.
- C. CONTRACTOR SHALL FIELD VERIFY ALL DIMENSIONS AND GRADES, NEW OR EXISTING PRIOR TO CONSTRUCTION. NOTIFY THE ARCHITECT OF ANY DISCREPANCIES WITH EXISTING OR NEW CONDITIONS.
- D. PROVIDE 1/2 INCH EXP JOINT MATERIAL IN CONC. SIDEWALKS AS INDICATED AND SCORE CONTROL JOINTS IN THE SIDEWALKS IN APPROXIMATE SQUARES AND/OR AS SHOWN ON THE DRAWINGS.
- E. CONTRACTOR SHALL FIELD VERIFY EXACT LOCATIONS OF EXISTING UTILITIES PRIOR TO COMMENCING WORK, EXCAVATION OR TRENCHING.
- F. VALVE BOXES, CLEANOUTS AND OTHER IMPROVEMENTS IN AFFECTED PAVED AREAS, LANDSCAPING SIDEWALKS SHALL BE RAISED/ LOWERED TO MEET NEW FINISH GRADES.
- G. MATCH PROPOSED GUTTER AT ALL TIES TO EXISTING CURB & GUTTER.
- H. TOP OF CURB ELEVATIONS ARE BASED ON THE STANDARD 6" FROM GUTTER TO CURB.
- I. ALL SIDEWALKS SHALL HAVE NO MORE THAN A 2% CROSS-SLOPE AND A 5% LONGITUDINAL SLOPE UNLESS NOTED TO BE A RAMP.

GRADING NOTES

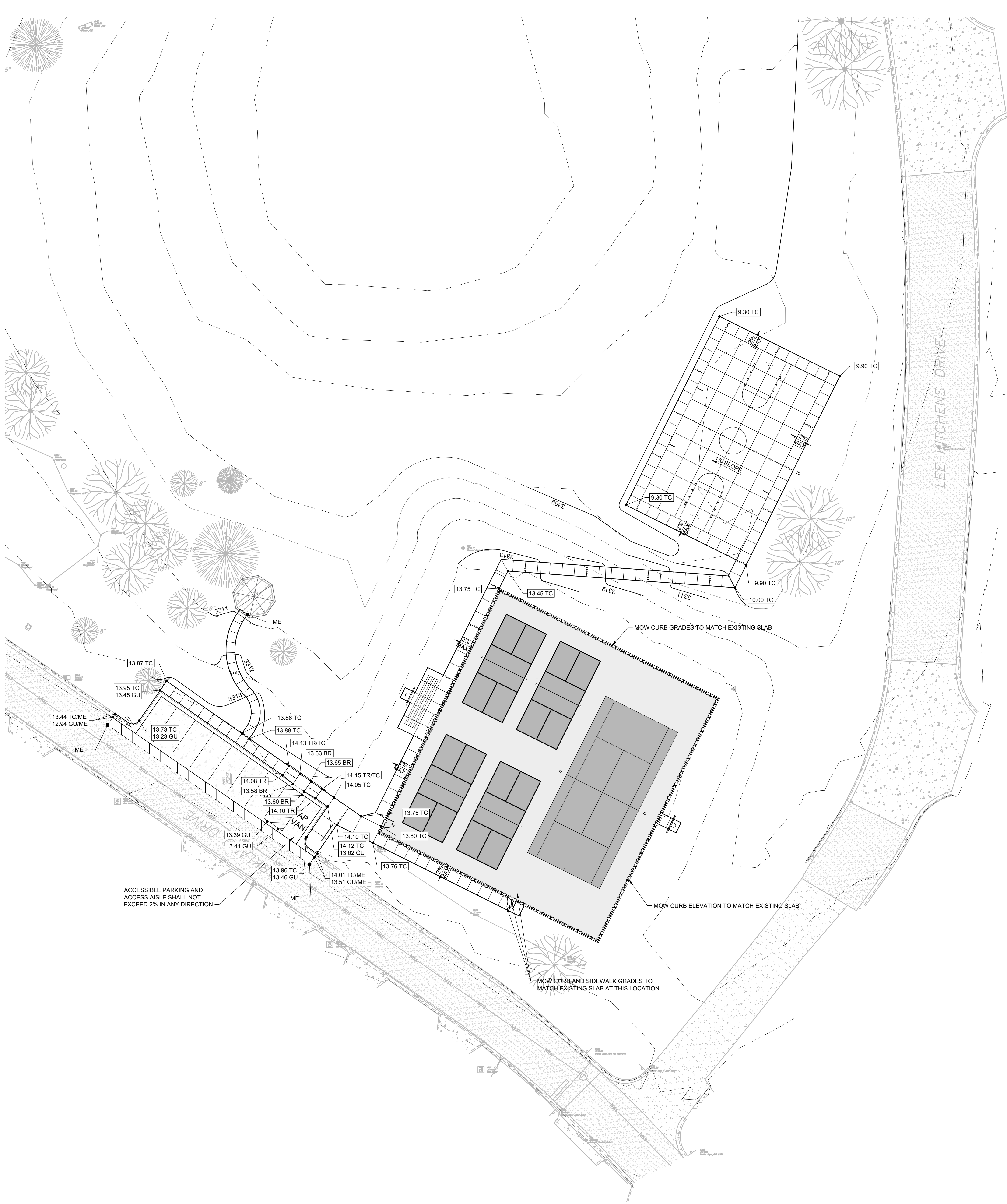
THE EARTHWORK FOR THIS PROJECT IS A NECESSARY AND INCIDENTAL PART OF THE WORK. IN THE CASE THAT THE EARTHWORK DOES NOT BALANCE, THE CONTRACTOR IS RESPONSIBLE FOR ANY ADDITIONAL COSTS ASSOCIATED WITH HAUL OFF OR IMPORT. THE TOTAL COST SHALL BE INCLUDED IN THE BID PROPOSAL AS A LUMP SUM. PAYMENT WILL NOT BE MADE ON A UNIT PRICE BASIS OR BY ANY OTHER SEPARATE MEASURED PAYMENT METHOD.

- 1. BASE BID SHALL INCLUDE ALL EARTHWORK NECESSARY TO ESTABLISH THE FINISHED GRADES AS SHOWN ON THIS PLAN. NO SEPARATE PAYMENT WILL BE MADE.
- 2. REFER TO SPECIFICATIONS FOR DISPOSAL OF EXCESS MATERIAL.
- 3. CONTRACTOR SHALL FIELD VERIFY ALL DIMENSIONS AND GRADES, NEW OR EXISTING PRIOR TO CONSTRUCTION. NOTIFY THE ENGINEER OF ANY DISCREPANCIES WITH EXISTING OR NEW CONDITIONS. THE CONTRACTOR SHALL EMPLOY A LICENSED PUBLIC SURVEYOR TO SET ALL GRADES, SPOT ELEVATIONS, FLOW LINES, ETC.

LEGEND

- FFE NEW SPOT ELEVATION, FINISHED FLOOR ELEVATION
- FG NEW SPOT ELEVATION, FINISH GRADE
- TC NEW SPOT ELEVATION, TOP OF CONCRETE
- TR NEW SPOT ELEVATION, TOP OF RAMP
- BR NEW SPOT ELEVATION, BOTTOM OF RAMP
- GU NEW SPOT ELEVATION, GUTTER
- ME NEW SPOT ELEVATION, MATCH EXISTING
- 1.0% DIRECTION OF FLOW AND VALVE
- 13.00 PROPOSED ELEVATION CONTOUR
- - - EXISTING ELEVATION CONTOUR

EXISTING UTILITIES
CONTRACTOR MUST VERIFY LOCATION OF ALL OVERHEAD AND UNDERGROUND UTILITIES PRIOR TO CONSTRUCTION. CONTRACTOR SHALL COORDINATE WITH CITY OFFICIALS AND UTILITY COMPANIES IN LOCATING UTILITIES. CONTRACTOR SHALL BE HELD RESPONSIBLE FOR LOSSES DUE TO DAMAGE TO UTILITIES. LOCATION FOR ALL UTILITIES SHOWN ON PLANS ARE APPROXIMATE. CONTRACTOR SHALL CALL TEXAS 811, 1-800-344-8377.



A:\2023\41339.23\03_DWG\060_LAND\04_SHEET\SL103-41339.DWG, 4/15/2024 10:59 AM, ipando



Ransom Canyon Jones-Warner Park Improvements



CLIENT
 Town of Ransom Canyon
 24 Lee Kitchens Drive
 Ransom Canyon, Texas 79366

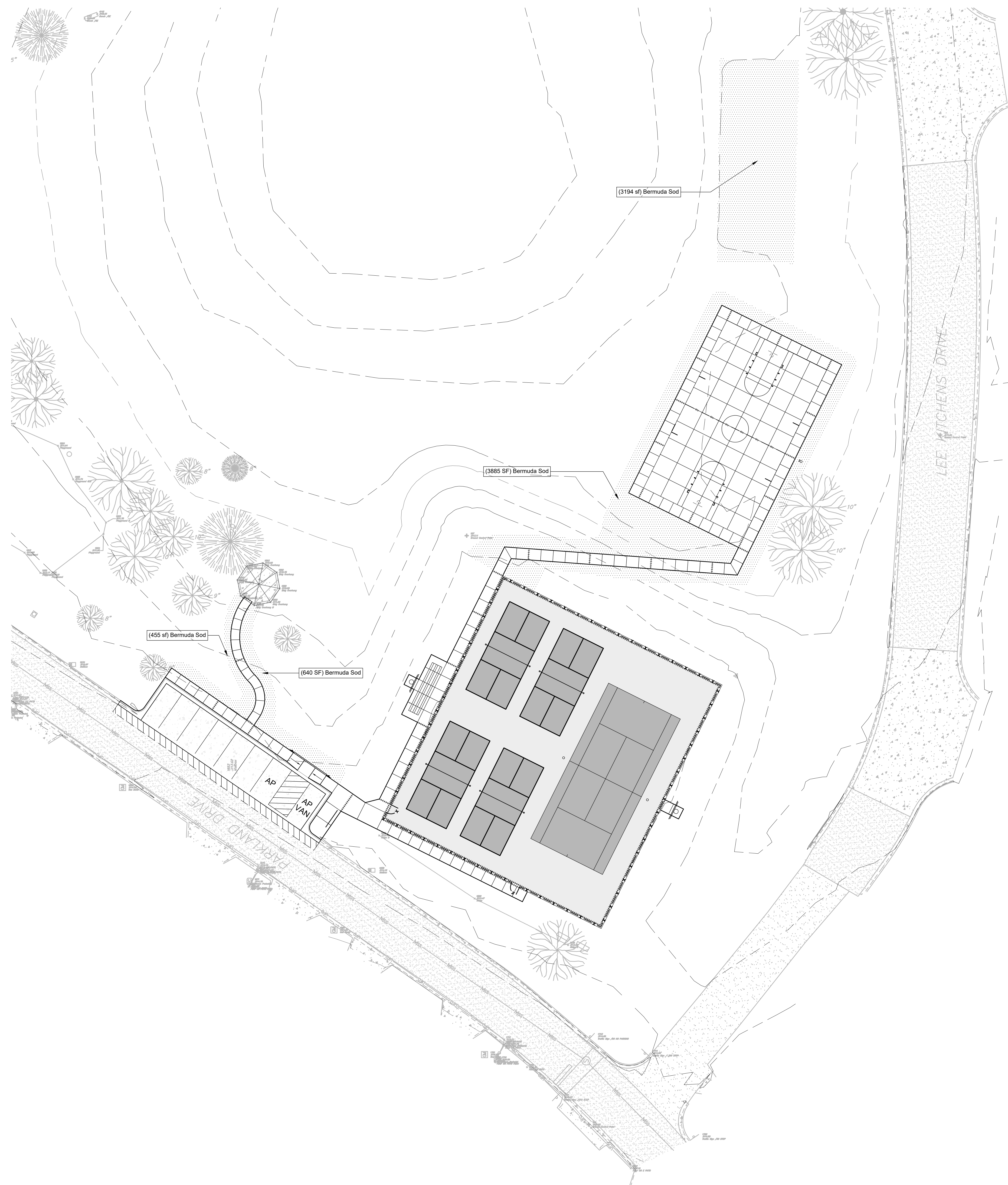
PROJECT NO.
 41339.23

KEY PLAN

DATE	DESCRIPTION
04/16/2024	Construction Documents

PLANT SCHEDULE

SYMBOL	CODE	QTY	BOTANICAL / COMMON NAME
	CT	8,174 SF	CYNODON DACTYLON 'TIFTUF' BERMUDA SOD



A1 SITE PLANTING PLAN
 1" = 20'



A:\2023\41339\2303_DSGN01_DWG\060_LAND04_SHEETSL\04-41339.DWG, 4/15/2024 10:59 AM, lparado

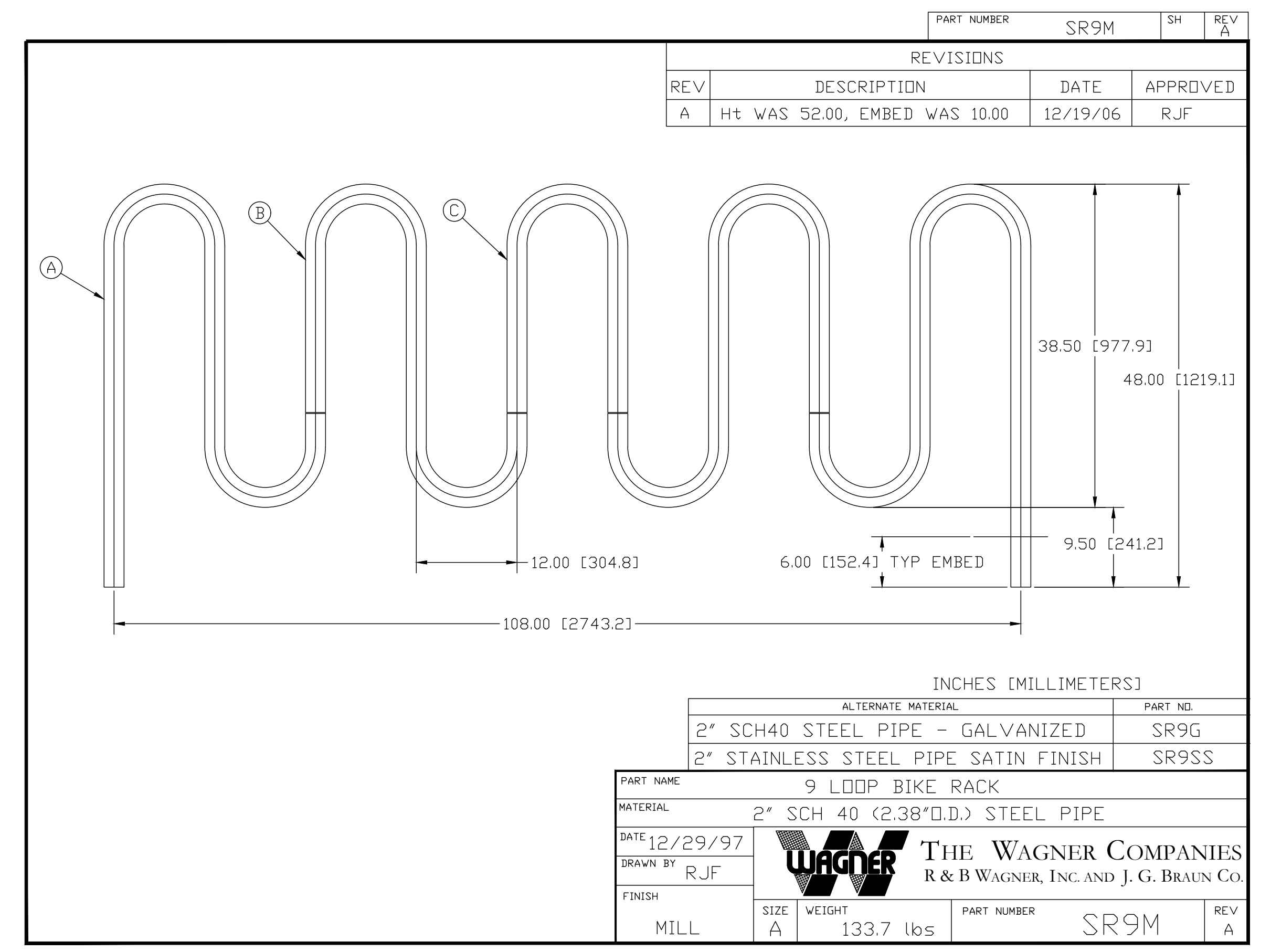


CLIENT
 Town of Ransom Canyon
 24 Lee Kitchens Drive
 Ransom Canyon, Texas 79366

PROJECT NO.
 41339.23

KEY PLAN

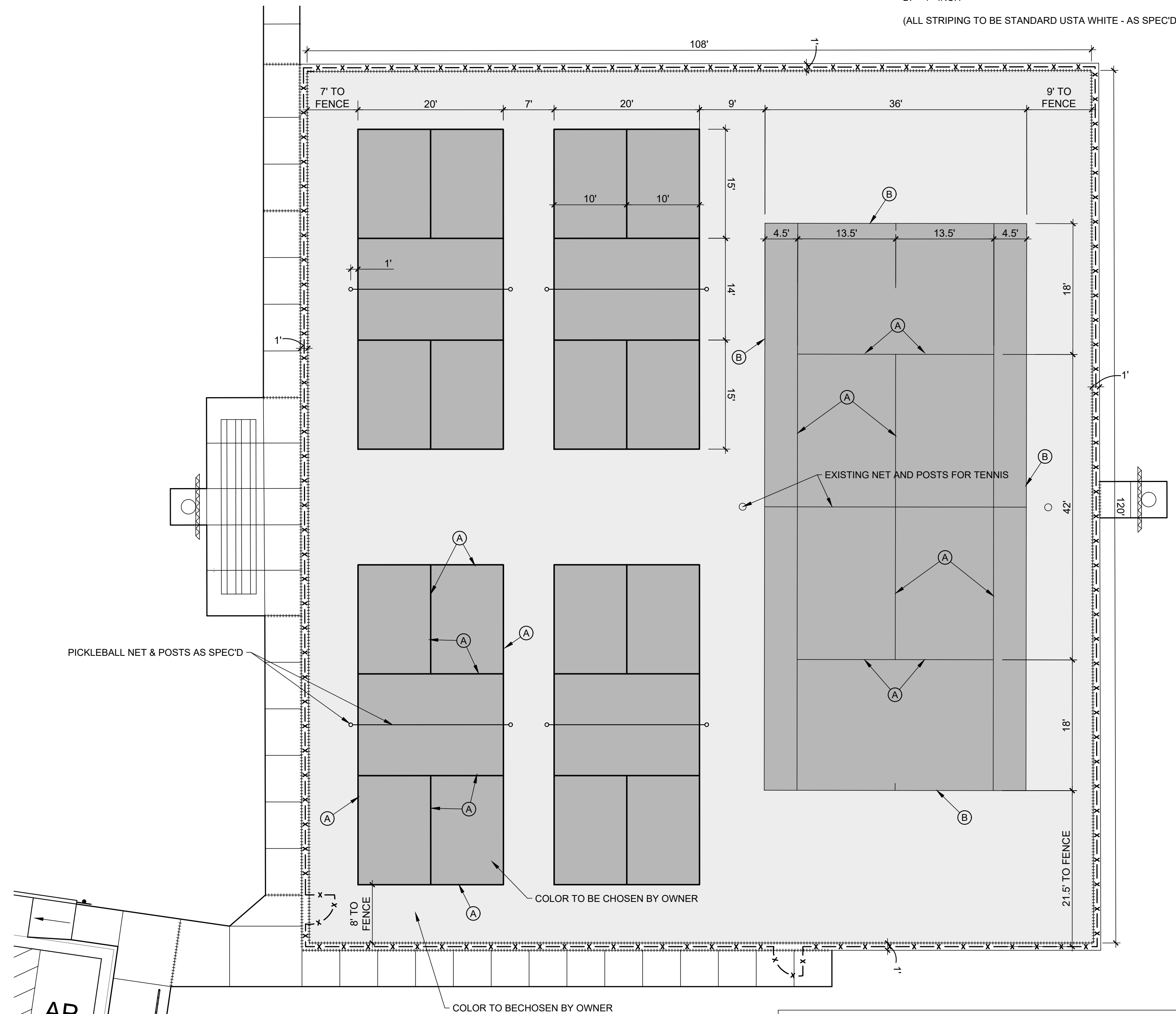
#	DATE	DESCRIPTION



D4 BIKE RACK
 NO SCALE

TYPICAL STRIPING

A. 2 - INCH
 B. 4 - INCH
 (ALL STRIPING TO BE STANDARD USTA WHITE - AS SPEC'D)



- NOTES:**
- ALL PICKLEBALL COURT PLAYING LINES SHALL BE TEXTURED LINE PAINT.
 - ALL PICKLEBALL COURT PLAYING LINES SHALL BE 2 INCHES WIDE.
 - ALL PICKLEBALL COURT PLAYING LINES SHALL BE MEASURED TO THE OUTSIDE EDGE OF THE PLAYING LINE, WITH THE EXCEPTION OF THE CENTER LINES WHICH SHALL BE MEASURED OUT TO CENTER.
 - DIMENSIONS TO CONFORM TO USA PICKLEBALL ASSOCIATION STANDARDS. SEE CURRENT EDITION OF PICKLEBALL COURTS: A CONSTRUCTION & MAINTENANCE MANUAL.

A4 TENNIS & PICKLEBALL LAYOUT PLAN
 1"=10'



04/16/2024

Parkhill.com

Ransom Canyon Jones-Warner Park Improvements



CLIENT
Town of Ransom Canyon
24 Lee Kitchens Drive
Ransom Canyon, Texas 79366

PROJECT NO.
41339.23

KEY PLAN

1 04/16/2024 100% Construction Documents

DATE DESCRIPTION

Electrical Site Plan
ES100

ELECTRICAL LEGEND

SYMBOL	DESCRIPTION	SYMBOL	DESCRIPTION
	CONDUCTORS IN CONDUIT. MINIMUM NUMBER IS (2) #12 AWG + #12 GND. PROVIDE NUMBER OF CONDUCTORS AS REQUIRED FOR SWITCHING INDICATED AND CONTINUING CIRCUITS.		HOMERUN TO PANELBOARD. REFER TO SPECIFICATIONS FOR LIMITING NUMBER OF CONDUCTORS PER HOMERUN.
	PAD MOUNTED UTILITY TRANSFORMER. REFER TO RISER DIAGRAM FOR ADDITIONAL INFORMATION.		UNDERGROUND ELECTRICAL.
	SURFACE MOUNTED SINGLE SECTION PANELBOARD. LABEL INDICATES PANEL NAME. REFER TO PANEL SCHEDULE AND RISER DIAGRAM FOR ADDITIONAL INFORMATION.		

NOTE:
ITEMS SHOWN AS DASHED INDICATE ITEMS WHICH ARE TO BE REMOVED.

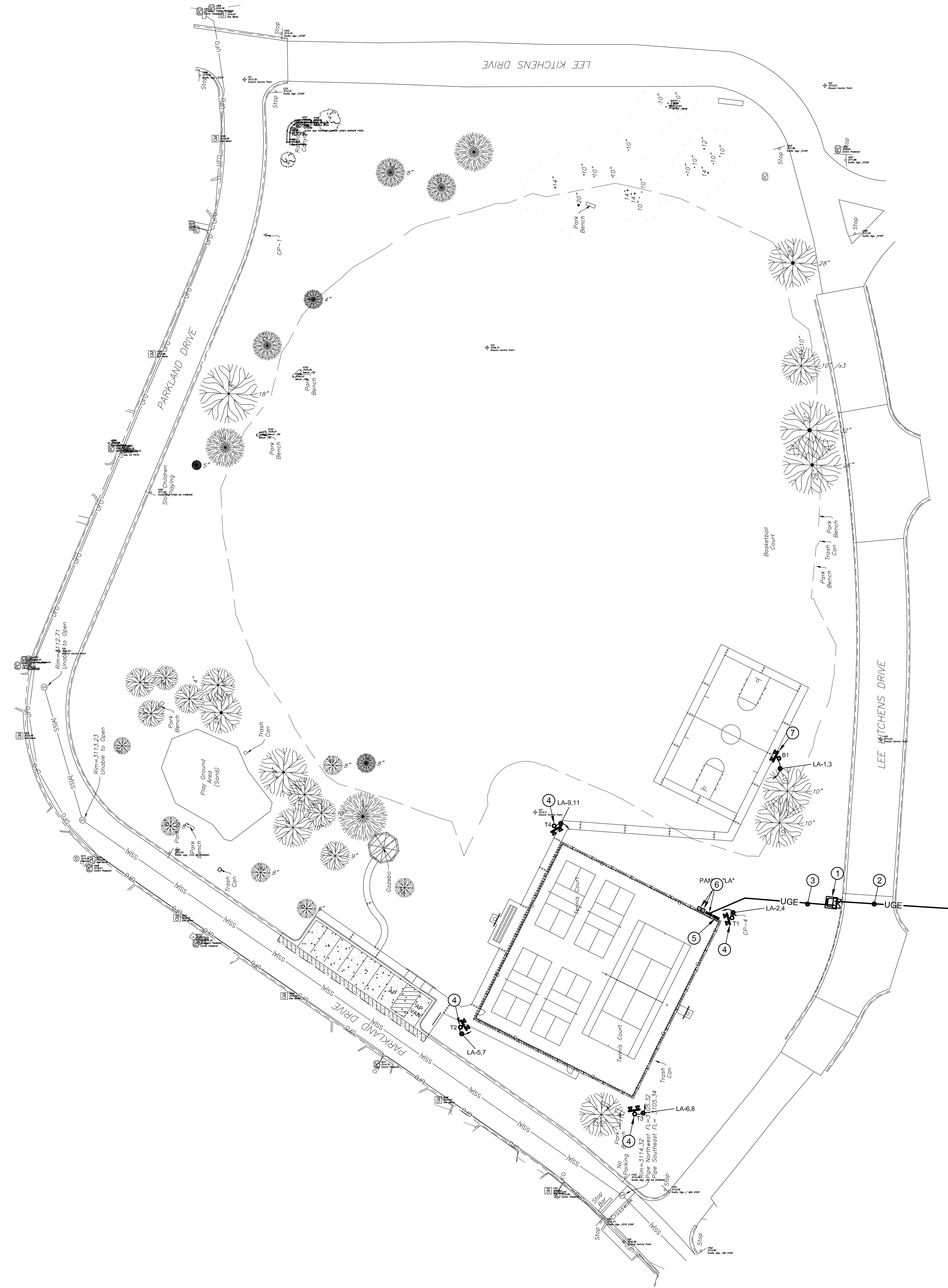
GENERAL NOTES

- COORDINATE WITH THE UTILITY SERVICE PROVIDERS FOR ALL REQUIREMENTS FOR DELIVERING POWER AND COMMUNICATION SERVICE TO THE NEW BUILDING.
- CONTRACTOR SHALL VERIFY LOCATION OF ALL UNDERGROUND UTILITIES PRIOR TO ANY EARTH WORK.
- SPORTS LIGHTING POLES AND SPORTS POLE SPECIFIED ARE BY MUSCO. REFER TO SHEET E-601 FOR ADDITIONAL INFORMATION.

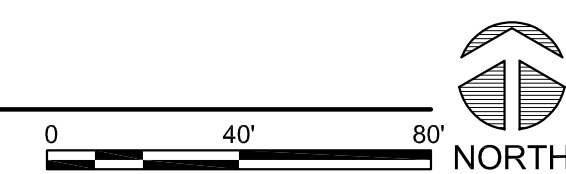
KEY NOTES

AS INDICATED BY: (K)

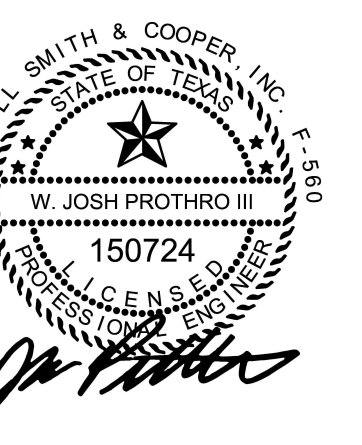
- NEW PAD MOUNT UTILITY TRANSFORMER PROVIDED BY SOUTH PLAINS ELECTRIC (SPEC). COORDINATE ALL REQUIREMENTS WITH SPEC.
- NEW UNDERGROUND PRIMARY UTILITY LINE BY SPEC. CONTRACTOR SHALL PROVIDE TRENCHING, CONDUIT, AND BACKFILL.
- NEW UNDERGROUND SECONDARY LINE. REFER TO ELECTRICAL RISER DIAGRAM ON SHEET E-601 FOR ADDITIONAL INFORMATION.
- NEW SPORTS LIGHT POLE. ROUTE CIRCUIT THROUGH LIGHTING CONTROL CABINET FOR CONTROL OF FIXTURES. REFER TO ELECTRICAL RISER DIAGRAM AND SCHEDULES ON SHEET E-601 FOR ADDITIONAL INFORMATION.
- NEW SPORTS LIGHTING CONTROL CABINET. COORDINATE ALL REQUIREMENTS WITH MUSCO.
- NEW PUSH BUTTON FOR CONTROL OF LIGHT FIXTURES FOR TWO HOURS. COORDINATE ALL REQUIREMENTS WITH MUSCO.
- PROVIDE NEW SPORTS LIGHT POLE. CONDUIT, WIRING AND ASSOCIATED CONTROLS FOR BASKETBALL COURT LIGHTING AS A PART OF ALTERNATE #1. ROUTE CIRCUIT THROUGH LIGHTING CONTROL CABINET FOR CONTROL OF FIXTURES. REFER TO ELECTRICAL RISER DIAGRAM AND SCHEDULES ON SHEET E-601 FOR ADDITIONAL INFORMATION.



A1 ELECTRICAL SITE PLAN
1" = 40'



A:20241339.2303_DWG150_ELEDES100-41339.DWG, 4/16/2024 10:19 AM, jprothro



04/16/2024

Parkhill.com

Ransom Canyon Jones-Warner Park Improvements



CLIENT
Town of Ransom Canyon
24 Lee Kitchens Drive
Ransom Canyon, Texas 79366

PROJECT NO.
41339.23

KEY PLAN

1 04/16/2024 100% Construction Documents

DATE DESCRIPTION

Electrical Schedules
E-601

PANELBOARD SCHEDULE													
PANELBOARD		ENCLOSURE: NEMA 3R		AIC		14,000							
VOLTS 120/240, PHASE 1, WIRE 3				MCB		100 AMP							
CIRC. NO.	CIRCUIT TRIP AMPS	BREAKER POLES	NOTE	LOAD DESCRIPTION	PHASE LOAD IN VA				LOAD DESCRIPTION	NOTE	CIRCUIT POLES	BREAKER TRIP AMPS	CIRC. NO.
					PHASE A	PHASE B	PHASE A	PHASE B					
1	30 A	2		SPORTS LIGHTING POLE B1	540		540		SPORTS LIGHTING POLE T1		2	30 A	2
3						540		540					4
5						540							6
7	30 A	2		SPORTS LIGHTING POLE T2					SPORTS LIGHTING POLE T3		2	30 A	8
9													
11	30 A	2		SPORTS LIGHTING POLE T4			1,225		LIGHTING CONTROL CABINET POWER		1	20 A	10
13													
15	20 A	1		DUPLEX RECEPTACLE	1,500		1,500		DUPLEX RECEPTACLE		1	20 A	12
17	20 A	1		SPARE					SPARE		1	20 A	14
19	20 A	1		SPARE					SPARE		1	20 A	16
21	20 A	1		SPARE					SPARE		1	20 A	18
23	20 A	1		SPARE					SPARE		1	20 A	20
25	20 A	1		SPARE					SPARE		1	20 A	22
27	20 A	1		SPARE					SPARE		1	20 A	24
29	20 A	1		SPARE					SPARE		1	20 A	26
SUB-TOTAL					3,120	1,080	3,805	2,040	SUB-TOTAL				

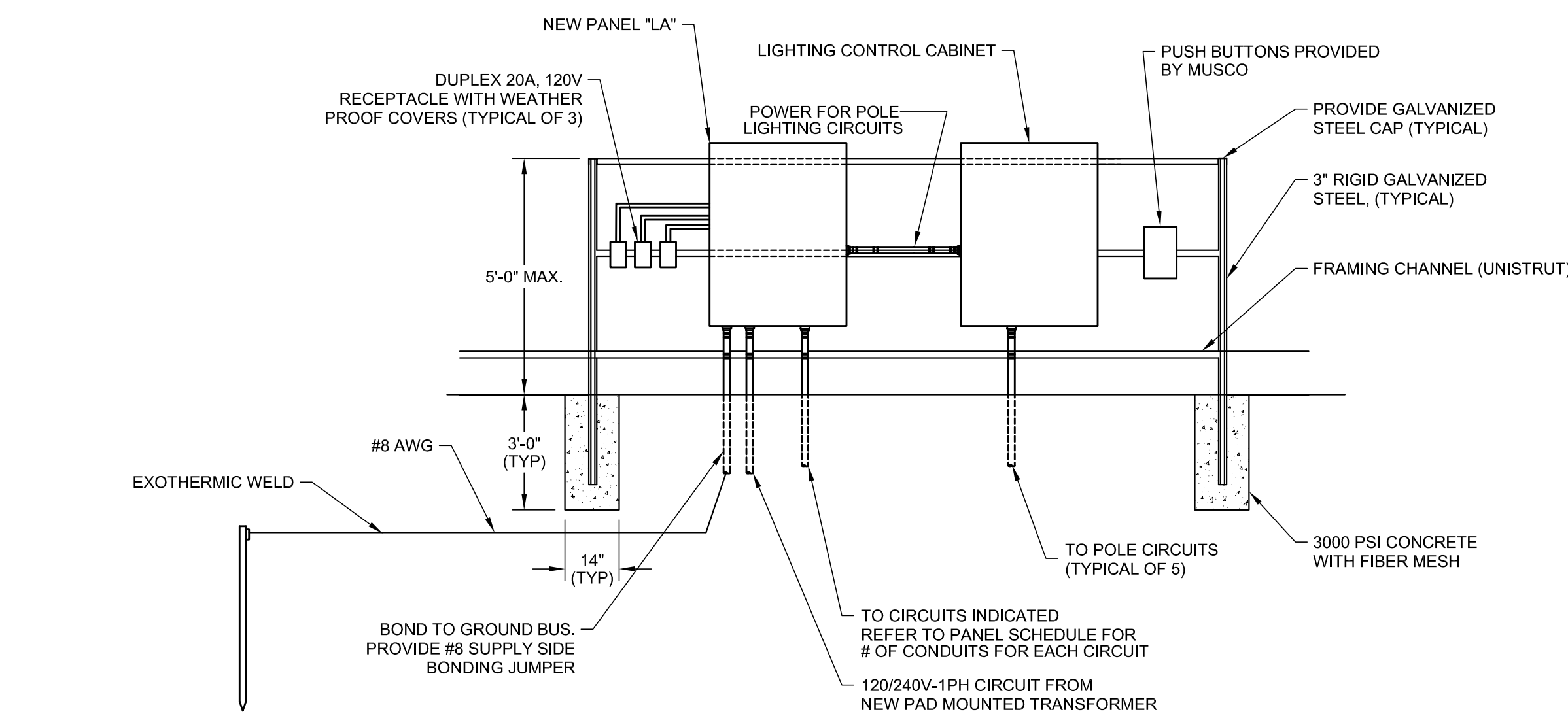
TOTAL PHASE LOAD (IN VA)		TOTAL CONNECTED LOAD (IN KVA)	10.0
PHASE A	6,925	ESTIMATED DEMAND LOAD (IN KVA)	10.0
PHASE B	3,120	DEMAND LINE AMPS	57.7

NOTES:

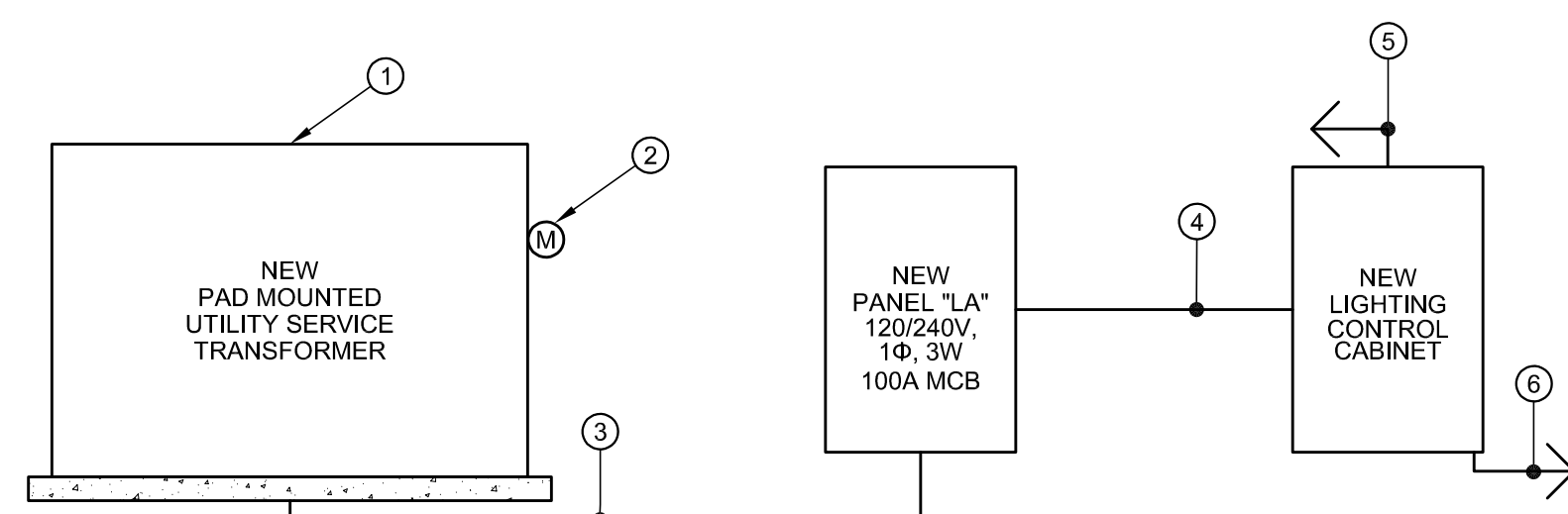
SPORTS LIGHTING FIXTURE SCHEDULE					
TYPE	SOURCE	VOLTAGE	WATTAGE	LUMENS	QUANTITY
TLC-LED-550	LED 5700K - 75 CRI	208V	540 W	67,000	10

POLE FIXTURE SCHEDULE						
POLE TYPE	POLE HEIGHT	FIXTURE MOUNTING HEIGHT	FIXTURE TYPE	FIXTURE QUANTITY	LOAD	CIRCUIT
T1	40 FEET	40 FEET	TLC-LED-500	2	1.08 kW	B
		50 FEET	TLC-LED-500	2	1.08 kW	B
T2	40 FEET	40 FEET	TLC-LED-500	2	1.08 kW	B
		50 FEET	TLC-LED-500	2	1.08 kW	B
T3	40 FEET	40 FEET	TLC-LED-500	2	1.08 kW	B
		50 FEET	TLC-LED-500	2	1.08 kW	B
T4	40 FEET	40 FEET	TLC-LED-500	2	1.08 kW	B
		50 FEET	TLC-LED-500	2	1.08 kW	A

CIRCUIT SCHEDULE					
CIRCUIT	CIRCUIT DESCRIPTION	POLE TYPE	CONTACTOR	CONTACTOR SIZE	FULL LOAD AMPS
A	BASKETBALL COURTS	B1	C1	30 A	5.2
				BASKETBALL AMPS: 5.2 A	
B	TENNIS/PICKLEBALL COURTS	T1	C2	30 A	5.2
			C3	30 A	5.2
			C4	30 A	5.2
			C5	30 A	5.2
				TENNIS/PICKLE BALL AMPS TOTAL: 20.8 A	
				TOTAL CONNECTED AMPS: 26 A	



RACK DETAIL
NO SCALE



KEY NOTES

- AS INDICATED BY: (M)
- NEW PAD MOUNT UTILITY TRANSFORMER BY SOUTH PLAINS ELECTRIC (SPEC), COORDINATE ALL REQUIREMENTS WITH SPEC.
 - NEW 100A METER CAN, COORDINATE ALL REQUIREMENTS WITH SPEC.
 - (3) #2 AWG IN 1/2" CONCRETE ENCASED PVC CONDUIT.
 - POWER CIRCUIT FOR EACH CONTACTOR FOR EACH LIGHT POLE. EXTEND (2) #8 AWG + #8 GND IN 1" CONDUIT FOR EACH CIRCUIT. REFER TO PANEL SCHEDULE LA ON THIS SHEET FOR ADDITIONAL INFORMATION.
 - PROVIDE A 120V, 20A CIRCUIT FROM PANEL LA FOR CONTROL POWER.
 - POWER CIRCUIT FOR EACH LIGHT POLE. REFER TO ELECTRICAL SITE PLAN ON SHEET ES100 FOR ADDITIONAL INFORMATION.

DETAIL PROVIDED BY
MUSCO FOR REFERENCE

System Requirements: Control System Summary

Project Name: Ransom Canyon Park | Project #: 235435
Control System ID: 1 of 1
Distribution Panel Location/ID: Service: Pickleball

Equipment Layout and Connection Details

Connection Details		Equipment	
ID	Description	ID	Description
1a	Line power to contactors, and equipment grounding conductor. Requires one circuit per contactor, size wiring per load and voltage drop.	1	Lighting contactor cabinet - primary
1b	Load power from contactors, and equipment grounding conductor. Requires one circuit per contactor, size wiring per load and voltage drop.	2	Push button switches
2a	Control power with equipment ground to control cabinet. Requires dedicated 20 A circuit. Provide transformer if control voltage not present.	3	Strobe signal lights
3a	Control harness - Control cabinet to push button switch. Use 12 AWG copper conductor for up to 300 feet. Requires 2 conductors per push button.		
3b	Control harness - Control cabinet to strobe signal light. Use 12 AWG copper conductor for up to 300 feet. Requires 2 conductors per strobe light.		

Sales Representative: Mitchell Stockton | Project Engineer: Tye Burch | Scan: 2354358 | Document ID: 235435P1V3C9-0410080639
www.musco.com | lighting@musco.com
Page 2 of 3 - 10-April-2024

I:\PROJECTS\PROJECTS\2023\41339.23\03_DWG\1501_DWG\1501_ELEC-601-41339.23.DWG, 4/15/2024 1:55:AM, JProthro