



CONDRA Y



DESIGN GROUP, INC.

## ADDENDUM No. 2

09-22-2022

PROJECT: University Medical Center  
Main Lobby Renovation  
602 Indiana Avenue  
Lubbock, Texas 79415

DATE: 09/22/2022  
PROJECT NO.: 22104

The following items take precedence over the drawings and project manual for the above-named project and in closing a contract shall become a part of the contract documents.

Where any item called for in the specifications or indicated on the drawings, is supplemented here, the original requirements remain in effect. Consider all supplemental conditions as added to the specifications and drawings.

Where any original item is amended, voided or superseded here, the provisions of such items not specifically amended, voided or superseded remain in effect.

**ITEM #1: Added Door Hardware Schedule** – Refer to attached Door Hardware Schedule.

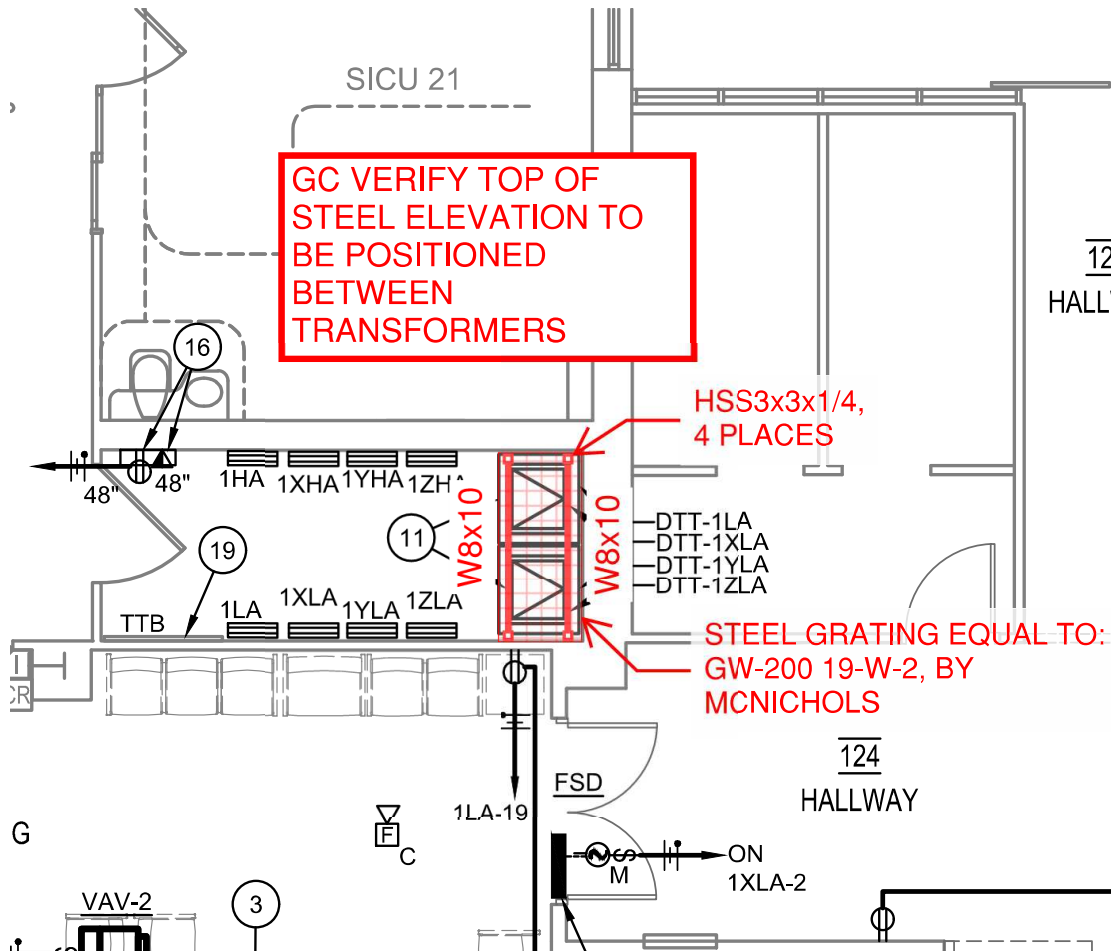
**ITEM #2: Clarification of Phases** – Alternate #1 will be completed during the construction of Phase 3 of the Base Bid.

**ITEM #3: Clarification of Existing Cameras and Card Readers** – All existing cameras and card readers to be salvaged for Owner reuse. Coordinate with Owner.

**ITEM #4: Clarification of Emergency Communication System Coordination** – Owner will remove and store items prior to construction for reinstallation.

**ITEM #5: Electrical Clarification of Lighted Mirror** – On Electrical Sheet E2, Keyed Note #6 shall be revised as follows: Contractor shall provide Silhouette Lighted Mirror "SIL-24.00x36.00-L7CSHD-30K" with 277v option. Connect to 0-10v dimming switch for control. Coordinate control and connection requirements with manufacturer. Coordinate switch location with Architect.

**ITEM #6: Structural Support Clarification for Transformers** – Refer to image below for clarification of structural support for transformers as referenced on Electrical Sheets E3 Keyed Note #11 and E4 Keyed Note #10.



End of Addendum

SECTION 087100 – DOOR HARDWARE

1.1 DOOR HARDWARE SCHEDULE

**Door Hardware Set No. 1.0**

Door No. 101A, 115A; each to have the following:

Qty.	Description	Item	Manufacturer	Finish
2 ea.	Mortise Cylinder	41 US32D	SARGENT	626
2 ea.	Rim Cylinder	34 US32D	SARGENT	626

Note: AS REQUIRED. BALANCE OF HDWE BY DOOR SUPPLIER.

**Door Hardware Set No. 2.0**

Door No. 107A, 108A, 116A; each to have the following:

Qty.	Description	Item	Manufacturer	Finish
3 ea.	Hinge, Full Mortise	TA2714 4-1/2" x 4-1/2" US26D	McKINNEY	652
1 ea.	Storeroom/Closet Lock	8204 LNL US26D	SARGENT	626
1 ea.	Surface Closer	351 UO EN	SARGENT	689
1 ea.	Kick Plate	K1050 10" x 34" US32D	ROCKWOOD	630
1 ea.	Wall Stop	409 US32D	ROCKWOOD	630
1 ea.	Gasketing	HSS2000xS88D 36" 84"	PEMKO	GRAY

**Door Hardware Set No. 3.0**

Door No. 109A; each to have the following:

Qty.	Description	Item	Manufacturer	Finish
1 ea.	Continuous Hinge	KCFM83-HD1	PEMKO	
1 ea.	Rim Exit Device	8513 ETL US32D	SARGENT	630
1 ea.	Surface Closer	LDP 351 CPS EN	SARGENT	689

**Door Hardware Set No. 4.0**

Door No. 112A, 113A, 128A, 129A; each to have the following:

Qty.	Description	Item	Manufacturer	Finish
3 ea.	Hinge, Full Mortise, Hvy Wt	T4A3786 4-1/2" x 4-1/2" US26D	McKINNEY	652
1 ea.	Pull Plate	102x70C US32D	ROCKWOOD	630
1 ea.	Push Plate	70C-RKW US32D	ROCKWOOD	630
1 ea.	Surface Closer	351 UO EN	SARGENT	689
1 ea.	Kick Plate	K1050 10" x 34" US32D	ROCKWOOD	630
1 ea.	Wall Stop	409 US32D	ROCKWOOD	630
3 ea.	Silencer	608-RKW	ROCKWOOD	630

**Door Hardware Set No. 5.0**

Door No. 118A; each to have the following:

<b>Qty.</b>	<b>Description</b>	<b>Item</b>	<b>Manufacturer</b>	<b>Finish</b>
3 ea.	Hinge, Full Mortise	TA2714 4-1/2" x 4-1/2" US26D	McKINNEY	652
1 ea.	Classroom Lock	8237 LNL US26D	SARGENT	626
1 ea.	Surface Closer	351 UO EN	SARGENT	689
1 ea.	Wall Stop	409 US32D	ROCKWOOD	630
3 ea.	Silencer	608-RKW	ROCKWOOD	

**Door Hardware Set No. 6.0**

Door No. 118B; each to have the following:

<b>Qty.</b>	<b>Description</b>	<b>Item</b>	<b>Manufacturer</b>	<b>Finish</b>
3 ea.	Hinge, Full Mortise	TA2714 4-1/2" x 4-1/2" US26D	McKINNEY	652
1 ea.	Storeroom/Closet Lock	8204 LNL US26D	SARGENT	626
1 ea.	Wall Stop	409 US32D	ROCKWOOD	630
3 ea.	Silencer	608-RKW	ROCKWOOD	

**Door Hardware Set No. 7.0**

Door No. 121A, 124A, 131A, 152A, 153A, 154A; each to have the following:

<b>Qty.</b>	<b>Description</b>	<b>Item</b>	<b>Manufacturer</b>	<b>Finish</b>
3 ea.	Hinge, Full Mortise	TA2714 4-1/2" x 4-1/2" US26D	McKINNEY	652
1 ea.	Office/Entry Lock	8205 LNL US26D	SARGENT	626
1 ea.	Surface Closer	351 UO EN	SARGENT	689
1 ea.	Wall Stop	409 US32D	ROCKWOOD	630
3 ea.	Silencer	608-RKW	ROCKWOOD	
1 Set	Gasketing	HSS2000 x S88D 36" 84"	PEMKO	GRAY

**Door Hardware Set No. 8.0**

Door No. 127A, 151A; each to have the following:

<b>Qty.</b>	<b>Description</b>	<b>Item</b>	<b>Manufacturer</b>	<b>Finish</b>
3 ea.	Hinge, Full Mortise, Hvy Wt	T4A3786 4-1/2" x 4-1/2" US26D	McKINNEY	652
1 ea.	Rim Exit Device	12 8813 ETL US32D	SARGENT	630
1 ea.	Surface Closer	351 UO EN	SARGENT	689
1 ea.	Wall Stop	409 US32D	ROCKWOOD	630
1 ea.	Gasketing	HSS2000xS88D 36" 84"	PEMKO	GRAY

**Door Hardware Set No. 9.0**

Door No. 123A; each to have the following:

<b>Qty.</b>	<b>Description</b>	<b>Item</b>	<b>Manufacturer</b>	<b>Finish</b>
3 ea.	Hinge, Full Mortise	TA2714 4-1/2" x 4-1/2" US26D	McKINNEY	652
1 ea.	Office/Entry Lock	8205 LNL US26D	SARGENT	626
1 ea.	Surface Closer	351 UO EN	SARGENT	689
3 ea.	Silencer	608-RKW	ROCKWOOD	
1 Set	Gasketing	HSS2000 x S88D 36" 84"	PEMKO	GRAY

**Door Hardware Set No. 10.0**

Door No. 122A; each to have the following:

<b>Qty.</b>	<b>Description</b>	<b>Item</b>	<b>Manufacturer</b>	<b>Finish</b>
6 ea.	Hinge, Full Mortise, Hvy Wt	T4A3786 4-1/2" x 4-1/2" US26D	McKINNEY	652
2 ea.	Exit Device	12-8810	SARGENT	630
2 ea.	Surface Closer	351 UO EN	SARGENT	689
2 ea.	Kick Plate	K1050 10" x 34" US32D	ROCKWOOD	630
1 Set	Astragal	305CN	PEMKO	

**Door Hardware Set No. 11.0**

Door No. 125A; each to have the following:

<b>Qty.</b>	<b>Description</b>	<b>Item</b>	<b>Manufacturer</b>	<b>Finish</b>
6 ea.	Hinge, Full Mortise, Hvy Wt	T4A3786 4-1/2" x 4-1/2" US26D	McKINNEY	652
2 ea.	Pull Plate	102x70C US32D	ROCKWOOD	630
2 ea.	Push Plate	70C-RKW US32D	ROCKWOOD	630
2 ea.	Surface Closer	351 UO EN	SARGENT	689
2 ea.	Kick Plate	K1050 10" x 34" US32D	ROCKWOOD	630
1 Set	Gasketing	HSS2000 x S88D 88" 84"	PEMKO	GRAY
1 Set	Astragal	305CN	PEMKO	

END OF SECTION 087100